

META Bath spout for wall mounting - Matte Black

META

13 801 660 Product version up to 5/27/2021



- 200mm projection
- circular normal flow
- rosette Ø 60 mm
- hole diameter 37 mm
- 1/2" connection
- max. flow 24.6 l/min at 3 bar flow pressure
- WRAS

| | | |
|---|-------------------------------|---------------|
|  | Matte Black | 13 801 660-33 |
|  | Chrome | 13 801 660-00 |
|  | Brushed Platinum | 13 801 660-06 |
|  | Dark Chrome | 13 801 660-19 |
|  | Light Gold | 13 801 660-26 |
|  | Brushed Light Gold | 13 801 660-27 |
|  | Brushed Bronze | 13 801 660-42 |
|  | Brushed Champagne (22kt Gold) | 13 801 660-46 |
|  | Champagne (22kt Gold) | 13 801 660-47 |
|  | Brushed Chrome | 13 801 660-93 |
|  | Brushed Dark Platinum | 13 801 660-99 |

Recommended miscellaneous



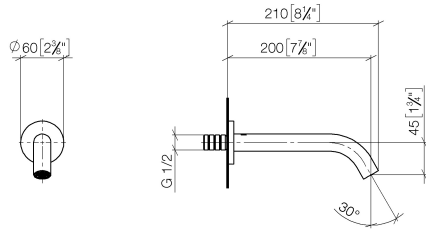
Concealed wall elbow -

35 085 970 90

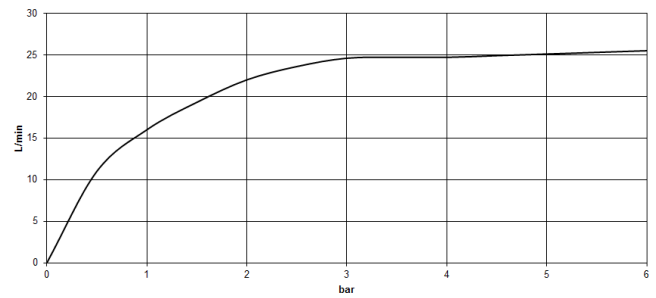
- min. recess depth 90 mm
- max. recess depth 163 mm

13 801 660 Product version up to 5/27/2021

mm [inches]



Flow rate chart



Codes & Standards

| | | | |
|---------------------------|--------------------------------|-----------|----------|
| ASME A112.18.1 | cUPC | DIN 4109 | ISO 3822 |
| Scottish Water Byelaws | UK Water Supply Regulations | Ü-Zeichen | |



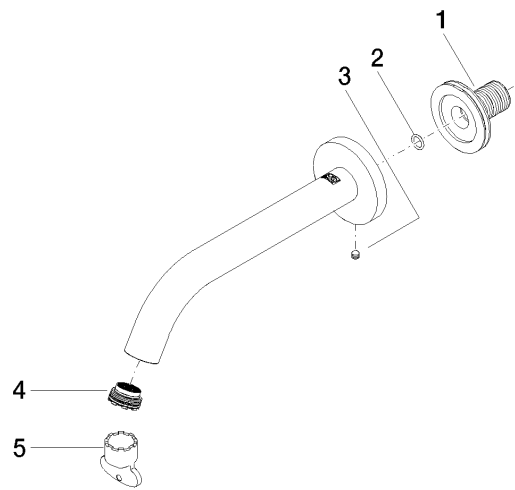
META Bath spout for wall mounting - Matte Black

META

13 801 660 Product version up to 5/27/2021

Certificates and sustainability

| | | | |
|------------|-----------|--------|-------------|
| IAPMO_4976 | WRAS_2001 | LGA_18 | WRAS_250402 |
|------------|-----------|--------|-------------|



Spare parts list

| No. | Item Number | Name | Quantity used | Delivery time |
|-----|--------------------|---------|---------------|---------------|
| 1 | 90 24 03 280 00 90 | nipple | 1.00 | 2 |
| 5 | 04 30 09 024 00 90 | key | 1.00 | 2 |
| 4 | 09 29 03 055 90 | aerator | 1.00 | 60 |
| 2 | 90 14 10 060 00 90 | seal | 1.00 | 2 |
| 3 | 90 31 11 112 00 90 | pin | 1.00 | 2 |