







CL.1 Bath spout for wall mounting - Brushed Platinum
CL.1

13 801 705
Product version from 3/9/2015



- 205mm projection
- rectangular spray pattern with 55 individual jets
- hole diameter 37 mm
- 1/2" connection
- plug-link mounting
- max. flow 24.6 l/min at 3 bar flow pressure
- WRAS

|   |                               |               |
|---|-------------------------------|---------------|
|  | Brushed Platinum              | 13 801 705-06 |
|  | Chrome                        | 13 801 705-00 |
|  | Dark Chrome                   | 13 801 705-19 |
|  | Brushed Champagne (22kt Gold) | 13 801 705-46 |
|  | Champagne (22kt Gold)         | 13 801 705-47 |
|  | Brushed Dark Platinum         | 13 801 705-99 |

Recommended miscellaneous

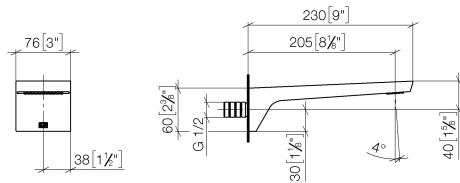


- Concealed wall elbow -**
35 085 970 90

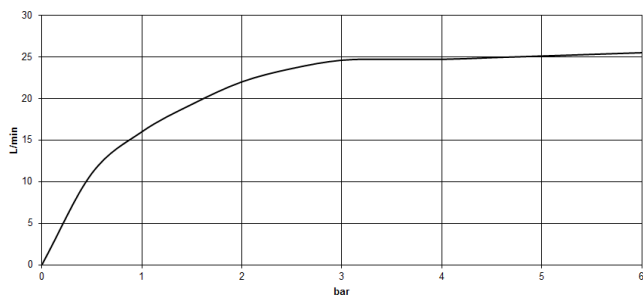
  - min. recess depth 90 mm
  - max. recess depth 163 mm

13 801 705 Product version from 3/9/2015

mm [inches]



**Flow rate chart**



**Codes & Standards**

|                           |                                |           |          |
|---------------------------|--------------------------------|-----------|----------|
| ASME A112.18.1            | cUPC                           | DIN 4109  | ISO 3822 |
| Scottish Water<br>Byelaws | UK Water Supply<br>Regulations | Ü-Zeichen |          |



## CL.1 Bath spout for wall mounting - Brushed Platinum

---

CL.1

13 801 705 Product version from 3/9/2015

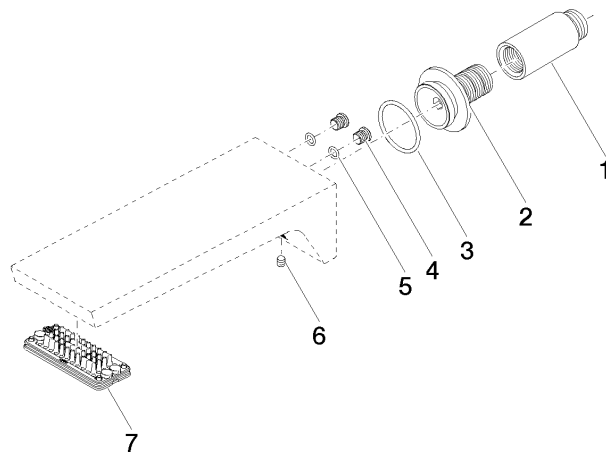
### Certificates and sustainability

---

WRAS\_1512

IAPMO\_4976

LGA\_28



### Spare parts list

| No. | Item Number        | Name      | Quantity used | Delivery time |
|-----|--------------------|-----------|---------------|---------------|
| 4   | 09 31 20 027 10-00 | plug      | 2.00          | 10            |
| 5   | 09 14 10 132 90    | seal      | 2.00          | 2             |
| 1   | 09 24 03 081 10 90 | extension | 1.00          | 2             |
| 7   | 90 11 02 299 00 90 | aerator   | 1.00          | 2             |
| 3   | 09 14 10 119 90    | seal      | 1.00          | 2             |
| 2   | 09 24 03 180 90    | nipple    | 1.00          | 2             |
| 6   | 90 31 11 004 00 90 | pin       | 1.00          | 2             |