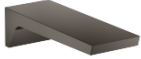






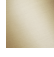

CL.1 Bath spout for wall mounting - Brushed Dark Platinum

CL.1

13 801 705



- 205mm projection
- rectangular spray pattern with 55 individual jets
- hole diameter 37 mm
- 1/2" connection
- plug-link mounting
- max. flow 24.6 l/min at 3 bar flow pressure
- WRAS 1512012

	Brushed Dark Platinum	13 801 705-99
	Chrome	13 801 705-00
	Brushed Platinum	13 801 705-06
	Dark Chrome	13 801 705-19
	Brushed Champagne (22kt Gold)	13 801 705-46
	Champagne (22kt Gold)	13 801 705-47

Recommended miscellaneous



Concealed wall elbow -

35 085 970 90

- max. recess depth 163 mm
- min. recess depth 90 mm

CL.1 Bath spout for wall mounting - Brushed Dark Platinum

CL.1

13 801 705

mm [inches]



Flow rate chart



Codes & Standards

ASME A112.18.1

cUPC

DIN 4109

ISO 3822

Scottish Water
Byelaws

UK Water Supply
Regulations

Ü-Zeichen



CL.1 Bath spout for wall mounting - Brushed Dark Platinum

CL.1

13 801 705

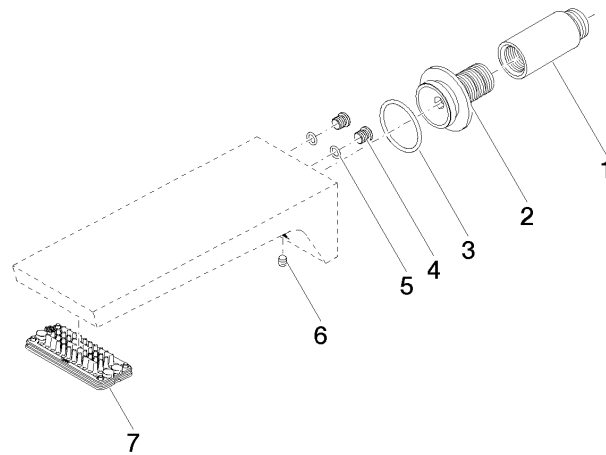
Certificates

IAPMO_4976

LGA_28

WRAS_1512

Product version from 3/9/2015





CL.1 Bath spout for wall mounting - Brushed Dark Platinum

CL.1

13 801 705

Spare parts list

Product version from 3/9/2015

No.	Item Number	Name	Quantity used	Delivery time
	09 24 03 081 10 90	extension	9	2