







MADISON Three-hole basin mixer with pop-up waste - Durabrand (23kt Gold)

20 700 360 Product version from 7/31/2009



- 135mm projection
- fixed spout
- circular, air-enriched flow
- height of mixer 72 mm
- height up to aerator 40 mm
- hole diameter valve 32 mm
- hole diameter spout 35 mm
- without rosette
- 2x 1/2" x 1/2" high pressure hose
- max. flow 7 l/min
- lead-free
- This product can help a building meet the requirements of Green Building Rating Systems, e.g. LEED®, BREEAM®, DGNB
- WRAS

Only suitable for basins with an overflow.

	Durabrand (23kt Gold)	20 700 360-09
	Chrome	20 700 360-00
	Brushed Platinum	20 700 360-06
	Platinum	20 700 360-08
	Brushed Durabrand (23kt Gold)	20 700 360-28
	Brushed Dark Platinum	20 700 360-99

Recommended miscellaneous

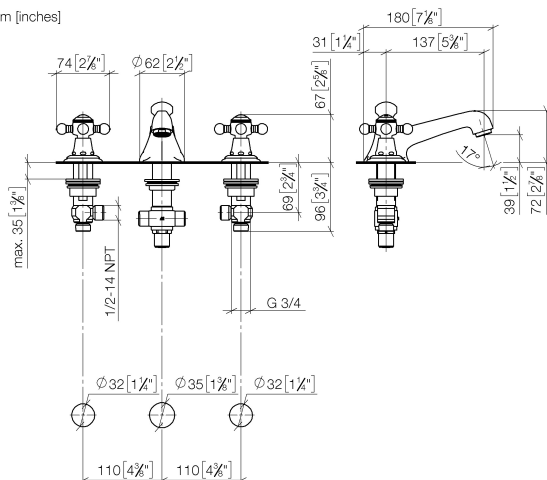


- High pressure hoses -** 12 506 970 90
- 2x 3/8" x 1/2" x 500mm high pressure hose

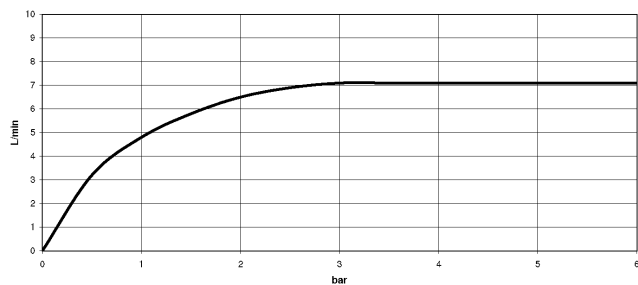
MADISON Three-hole basin mixer with pop-up waste - Durabrand (23kt Gold)

20 700 360 Product version from 7/31/2009

mm [inches]



Flow rate chart



Codes & Standards

DIN 4109

EN 200

Executive Order
no. 1007

ISO 3822

Scottish Water
Byelaws

UK Water Supply
Regulations

Ü-Zeichen

VA-Zeichen



MADISON Three-hole basin mixer with pop-up waste - Durabrass (23kt Gold)

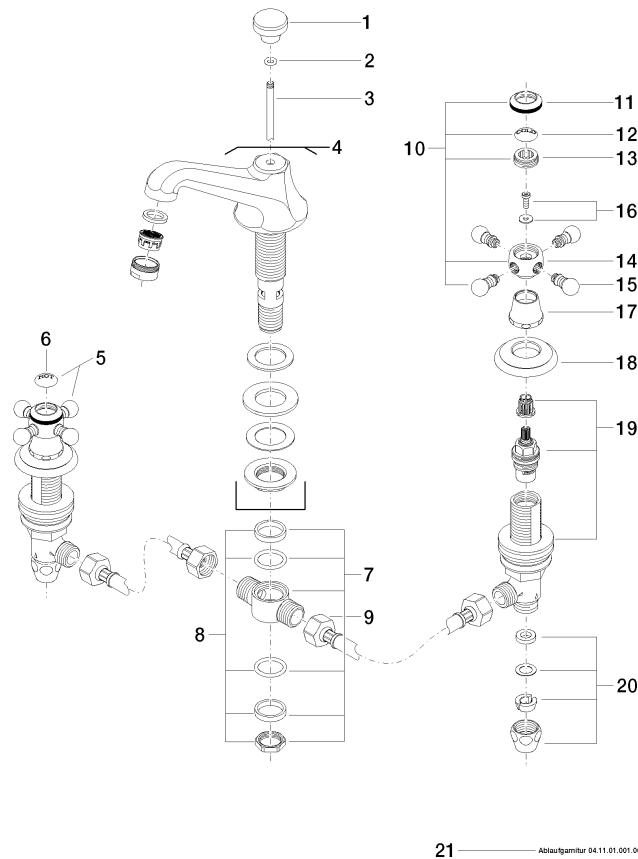
20 700 360 Product version from 7/31/2009

Certificates

GDV_0400	ETA_17	WRAS_1512	LGA_8	WRAS_240602
----------	--------	-----------	-------	-------------

MADISON Three-hole basin mixer with pop-up waste - Durabronz (23kt Gold)

20 700 360 Product version from 7/31/2009



21 ————— Ablaufgarnitur 04.11.01.001.00.FP

Spare parts list

No.	Item Number	Name	Quantity used	Delivery time
1	09 20 36 030-09	handle	1	40
2	90 14 10 062 00 90	seal	1	2
3	09 31 09 004-09	pull-rod	1	40
4	13 700 380-09	spout	1	40
5	04 20 36 002 07-09	handle (hot)	1	40
6	09 26 01 011 90	accessories	1	2
7	90 17 11 020 10 90	distributor	1	2
8	90 23 10 012 00 90	gasket kit	1	2
9	04 30 04 096 00 90	hose	2	2
10	04 20 36 002 06-09	handle (cold)	1	40
11	09 20 36 005-09	handle	2	40
12	09 26 01 010 90	accessories	1	2
13	09 20 83 006 90	handle	2	2
14	09 20 36 002-09	handle	2	40
15	09 20 36 004-09	handle	8	40
16	04 30 30 029 00 90	fixing set	2	2
17	09 21 02 055-09	cover	2	40
18	09 27 35 001-09	rosette	2	40
19	90 17 11 040 51 90	side panel	2	2
20	90 23 30 040 00-09	threaded connector	2	40
21	90 11 01 001 00-09	pop-up waste	1	40