

## TARA Three-hole mixer - Chrome

TARA

20 815 892



- 235mm projection
- pivotable spout 360°
- air-enriched flow
- height of mixer 370 mm
- height up to aerator 212 mm
- hole diameter spout 35 mm
- hole diameter valve 32 mm
- max. flow 7 l/min at 3 bar flow pressure
- lead-free
- This product can help a building meet the requirements of Green Building Rating Systems, e.g. LEED®, BREEAM®, DGNB
- WRAS 2107052

	Chrome	20 815 892-00
	Brushed Platinum	20 815 892-06
	Platinum	20 815 892-08
	Durabronze (23kt Gold)	20 815 892-09
	Dark Chrome	20 815 892-19
	Brushed Durabronze (23kt Gold)	20 815 892-28
	Matte Black	20 815 892-33
	Brushed Champagne (22kt Gold)	20 815 892-46
	Champagne (22kt Gold)	20 815 892-47
	Brushed Chrome	20 815 892-93
	Brushed Dark Platinum	20 815 892-99

### Recommended miscellaneous

**Strainer waste with control handle - Chrome** 10 710 970-00

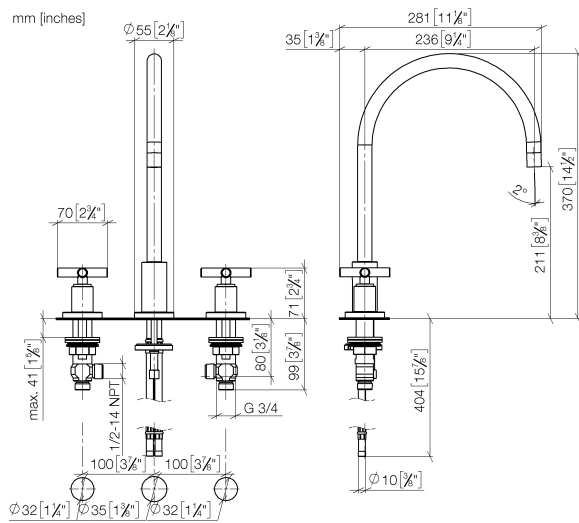


### Recommended miscellaneous

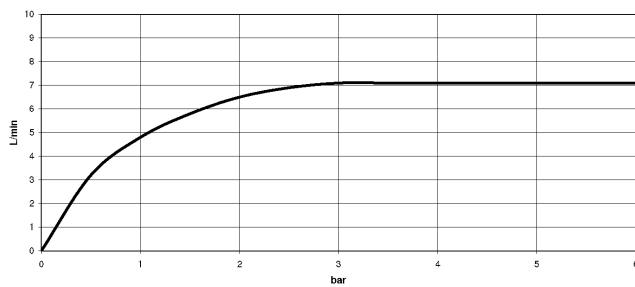
**Dispenser with rosette - Chrome** 82 444 970-00



20 815 892



### Flow rate chart



## Codes & Standards

DIN 4109	EN 200	Executive Order no. 1007	ISO 3822
Scottish Water Byelaws	UK Water Supply Regulations	Ü-Zeichen	VA-Zeichen



## TARA Three-hole mixer - Chrome

TARA

20 815 892

### Certificates

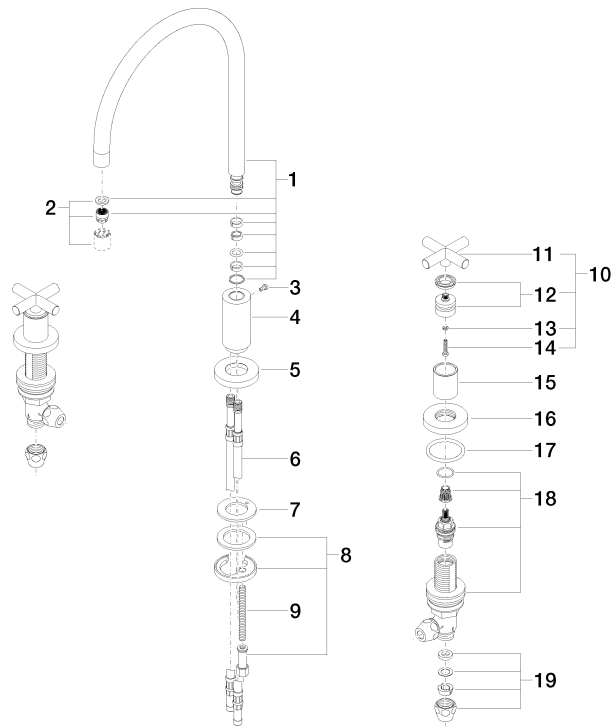
WRAS\_2107

LGA\_19

ETA\_18

GDV\_0400

**Product version from 6/30/2009**





## TARA Three-hole mixer - Chrome

TARA

20 815 892

### **Spare parts list**

**Product version from 6/30/2009**