

# Affusion pipe with cover plate - Chrome

SERIES SPECIFIC

27 838 979 Product version up to 3/2/2021



- LAMINAR FLOW, max. flow rate 15 l/min (at 3 bar)
- 3/8" shower outlet
- cover plate 240 x 60 mm
- metal shower hose 1250mm with integrated anti-twist protection
- 1/2" connection
- plug-link mounting

Intrinsic protection against back flow.

|  |                                   |               |
|--|-----------------------------------|---------------|
|  | Chrome                            | 27 838 979-00 |
|  | Brushed Platinum                  | 27 838 979-06 |
|  | Platinum                          | 27 838 979-08 |
|  | Dark Chrome                       | 27 838 979-19 |
|  | Brushed Light Gold                | 27 838 979-27 |
|  | Brushed Durabronze<br>(23kt Gold) | 27 838 979-28 |
|  | Matte Black                       | 27 838 979-33 |
|  | Brushed Chrome                    | 27 838 979-93 |
|  | Brushed Dark<br>Platinum          | 27 838 979-99 |

## Recommended miscellaneous

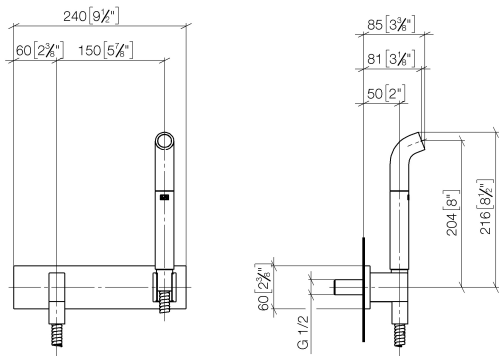


- Concealed wall elbow -**
- min. recess depth 90 mm
  - max. recess depth 163 mm

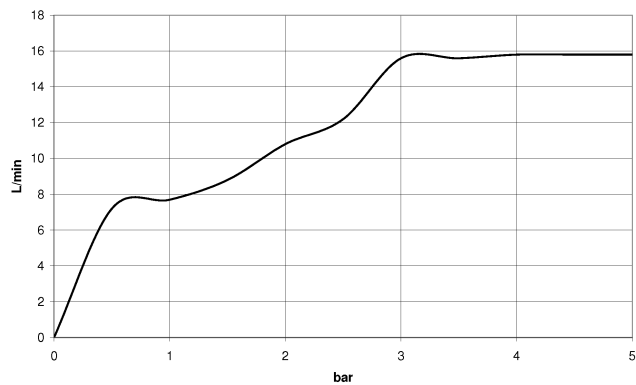
35 085 970 90

27 838 979 Product version up to 3/2/2021

mm [inches]



### Flow rate chart



### Codes & Standards

DIN 4109

EN 1717

ISO 3822

Ü-Zeichen



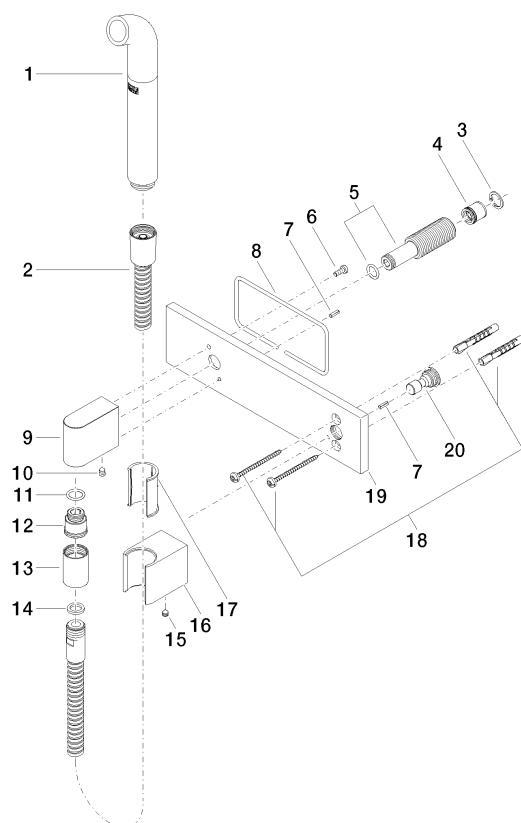
## Affusion pipe with cover plate - Chrome

SERIES SPECIFIC

27 838 979 Product version up to 3/2/2021

Certificates and sustainability

Belgaqua\_21-023-2 LGA\_38



## Spare parts list

| No. | Item Number        | Name   | Quantity used | Delivery time |
|-----|--------------------|--|---------------|---------------|
| 20  | 09 24 03 073 90    | nipple   | 1.00          | 2             |
| 7   | 09 31 11 026 90    | pin  | 2.00          | 2             |
| 18  | 05 30 31 025 00 90 | fixing set                                       | 1.00          | 2             |
| 2   | 90 30 02 072 00-00 | Metal shower hose 1/2" x 3/8" x 1250 mm - Chrome | 1.00          | 10            |
| 6   | 09 14 10 008 90    | seal   | 1.00          | 2             |
| 16  | 09 17 20 044-00    | holder   | 1.00          | 10            |
| 19  | 09 11 02 133-00    | plate  | 1.00          | 10            |
| 8   | 09 14 03 127 90    | seal   | 1.00          | 2             |
| 12  | 09 24 03 107 20 90 | nipple   | 1.00          | 2             |
| 5   | 90 24 03 212 00 90 | nipple   | 1.00          | 2             |
| 9   | 09 11 03 046-00    | connection                                       | 1.00          | 10            |
| 17  | 09 18 40 078 90    | sleeve   | 1.00          | 2             |
| 3   | 09 16 01 014 90    | ring   | 1.00          | 2             |
| 13  | 90 21 02 069 00-00 | cover  | 1.00          | 10            |
| 4   | 09 23 01 046 90    | back-flow preventer                              | 1.00          | 2             |
| 11  | 90 14 10 077 00 90 | seal   | 1.00          | 2             |
| 1   | 04 12 11 073 01-00 | spout  | 1.00          | 10            |
| 10  | 90 31 11 004 00 90 | pin  | 1.00          | 2             |
| 14  | 90 14 20 026 00 90 | seal   | 1.00          | 2             |
| 15  | 90 31 11 112 00 90 | pin  | 1.00          | 2             |