

Wall elbow with integrated shower holder - Platinum

28 490 660 Product version from 10/1/2023




- 3/8" shower outlet
- rosette Ø 60 mm
- 1/2" connection
- WRAS


Intrinsic protection against back flow.

	Platinum	28 490 660-08
	Chrome	28 490 660-00
	Brushed Platinum	28 490 660-06
	Dark Chrome	28 490 660-19
	Light Gold	28 490 660-26
	Brushed Light Gold	28 490 660-27
	Brushed Durabrass (23kt Gold)	28 490 660-28
	Matte Black	28 490 660-33
	Brushed Bronze	28 490 660-42
	Brushed Champagne (22kt Gold)	28 490 660-46
	Champagne (22kt Gold)	28 490 660-47
	Cyprum	28 490 660-49
	Brushed Chrome	28 490 660-93
	Brushed Dark Platinum	28 490 660-99

Recommended miscellaneous

	Concealed wall elbow - •min. recess depth mm •max. recess depth mm	35 085 970 90
---	---	---------------

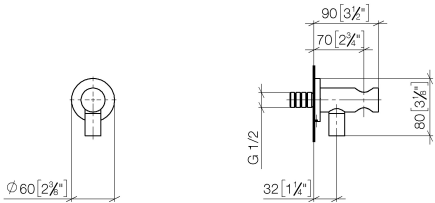
Recommended miscellaneous

	Concealed wall elbow - •min. recess depth mm •max. recess depth mm	35 085 970 90
---	---	---------------

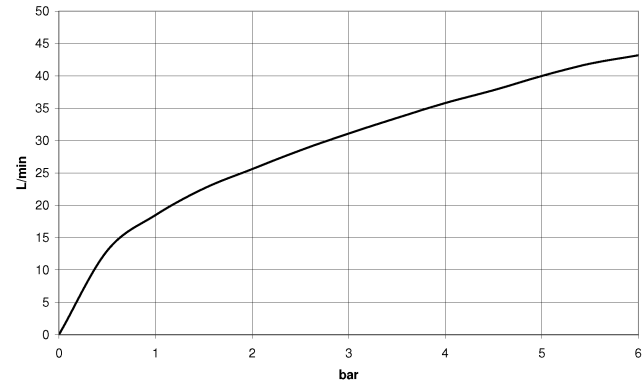
Wall elbow with integrated shower holder - Platinum

28 490 660 Product version from 10/1/2023

mm [inches]



Flow rate chart



Codes & Standards

EN 1717	Scottish Water Byelaws	UK Water Supply Regulations
---------	---------------------------	--------------------------------



Wall elbow with integrated shower holder - Platinum

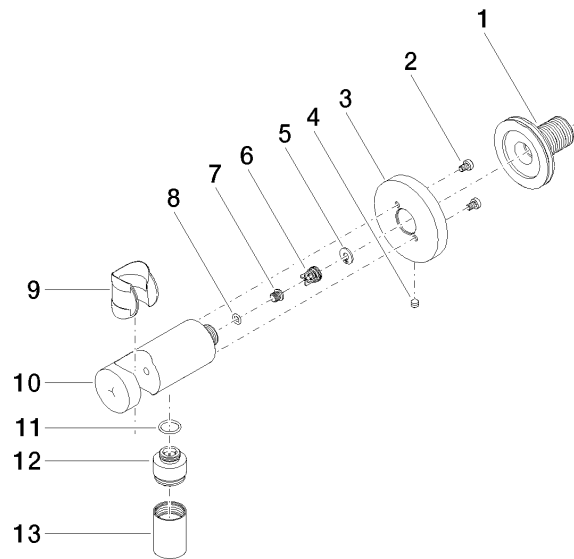
28 490 660 Product version from 10/1/2023

Certificates

Belgaqua_21-024-2 WRAS_1912

Wall elbow with integrated shower holder - Platinum

28 490 660 Product version from 10/1/2023



Spare parts list

No.	Item Number	Name	Quantity used	Delivery time
1	90 24 03 280 00 90	nipple	1	2
2	09 30 30 037 90	screw	2	2
3	09 27 66 001-08	rosette	1	40
4	09 31 11 112 90	pin	1	60
5	09 16 01 023 90	ring	1	2
6	09 23 01 131 90	back-flow preventer	1	2
7	09 30 30 113 20 90	screw	1	2
8	09 14 10 001 90	seal	1	2
9	09 18 40 216 90	sleeve	1	2
10	09 11 03 124-08	connection	1	40
11	09 14 10 213 90	seal	1	2
12	09 24 03 279-08	nipple	1	40
13	90 21 02 069 00-08	cover	1	40