

Rain shower with wall fixing 220 mm - Chrome

SERIES SPECIFIC

28 649 670 Product version from 3/13/2017



- 450mm projection
- rain shower Ø 220 mm
- PURE RAIN, max. flow rate 14 l/min (at 3 bar)
- Function from: 7 l/min
- rosette 65 x 65 mm
- 1/2" connection
- with anti-scale system
- quick clearing
- WRAS

	Chrome	28 649 670-00
	Brushed Platinum	28 649 670-06
	Platinum	28 649 670-08
	Dark Chrome	28 649 670-19
	Brushed Light Gold	28 649 670-27
	Brushed Durabronze (23kt Gold)	28 649 670-28
	Matte Black	28 649 670-33
	Brushed Champagne (22kt Gold)	28 649 670-46
	Champagne (22kt Gold)	28 649 670-47
	Brushed Chrome	28 649 670-93
	Brushed Dark Platinum	28 649 670-99

Recommended miscellaneous

Concealed wall elbow -

35 085 970 90



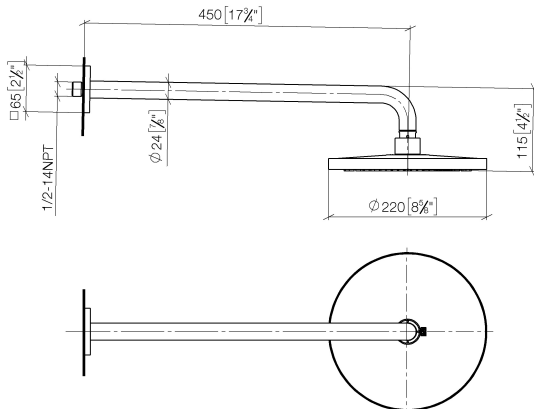
- min. recess depth 90 mm
- max. recess depth 163 mm

Rain shower with wall fixing 220 mm - Chrome

SERIES SPECIFIC

28 649 670 Product version from 3/13/2017

mm [inches]



Flow rate chart



Codes & Standards

DIN 4109

ISO 3822

Scottish Water
Byelaws

UK Water Supply
Regulations

Ü-Zeichen



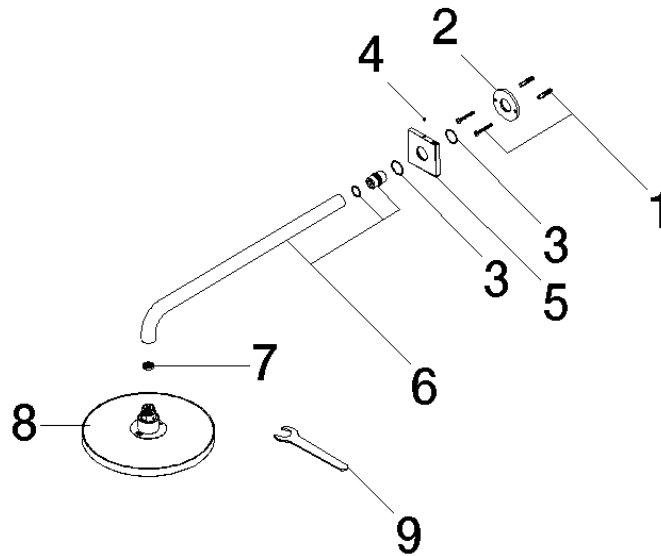
Rain shower with wall fixing 220 mm - Chrome

SERIES SPECIFIC

28 649 670 Product version from 3/13/2017

Certificates and sustainability

WRAS_2212 LGA_38



Spare parts list

No.	Item Number	Name	Quantity used	Delivery time
	3 09 14 10 150 90	seal	2.00	2
	2 09 17 20 120 90	holder	1.00	2
	6 90 11 03 070 00-00	pipe	1.00	10
	1 04 30 31 032 00 90	fixing set	1.00	2
	8 04 12 05 092 00-00	shower	1.00	10
	7 09 23 01 075 90	insert	1.00	2
	9 90 30 09 069 00 90	key	1.00	2
	5 09 27 67 015-00	rosette	1.00	10
	4 90 31 11 038 00 90	pin	1.00	2