




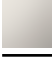









## Rain shower with wall fixing FlowReduce 400 mm - Brushed Chrome

28 658 970 Product version from 4/1/2024



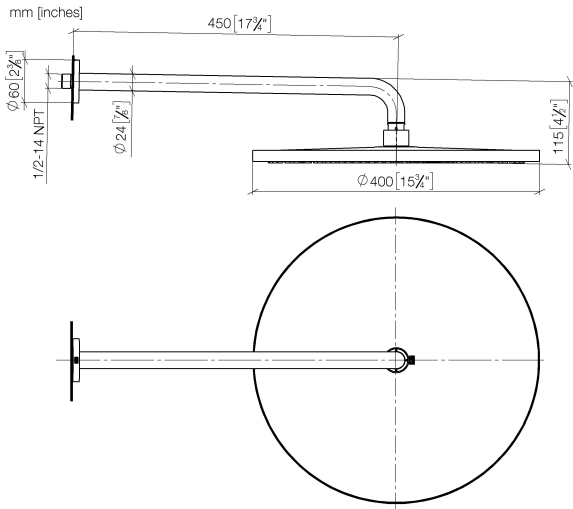
- 450mm projection
- rain shower Ø 400 mm
- PURE RAIN, max. flow rate 12 l/min (at 3 bar)
- Function from: 12 l/min
- rosette Ø 60 mm
- 1/2" connection
- with anti-scale system
- This product can help a building meet the requirements of Green Building Rating Systems, e.g. LEED®, BREEAM®, DGNB

To be provided by the customer. Zigbee Gateway!

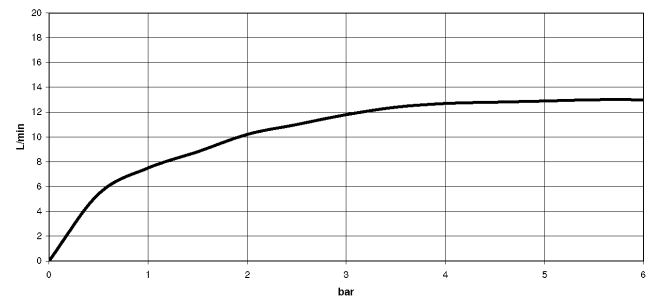
|   |                                |               |
|---|--------------------------------|---------------|
|    | Brushed Chrome                 | 28 658 970-93 |
|    | Chrome                         | 28 658 970-00 |
|    | Brushed Platinum               | 28 658 970-06 |
|    | Platinum                       | 28 658 970-08 |
|    | Dark Chrome                    | 28 658 970-19 |
|    | Light Gold                     | 28 658 970-26 |
|    | Brushed Light Gold             | 28 658 970-27 |
|    | Brushed Durabronze (23kt Gold) | 28 658 970-28 |
|    | Matte Black                    | 28 658 970-33 |
|   | Brushed Bronze                 | 28 658 970-42 |
|  | Brushed Champagne (22kt Gold)  | 28 658 970-46 |
|  | Champagne (22kt Gold)          | 28 658 970-47 |
|  | Brushed Dark Platinum          | 28 658 970-99 |

**Rain shower with wall fixing FlowReduce 400 mm - Brushed Chrome**

28 658 970 Product version from 4/1/2024



**Flow rate chart**



**Codes & Standards**

DIN 4109

ISO 3822

Ü-Zeichen



## Rain shower with wall fixing FlowReduce 400 mm - Brushed Chrome

---

28 658 970 Product version from 4/1/2024

### Certificates

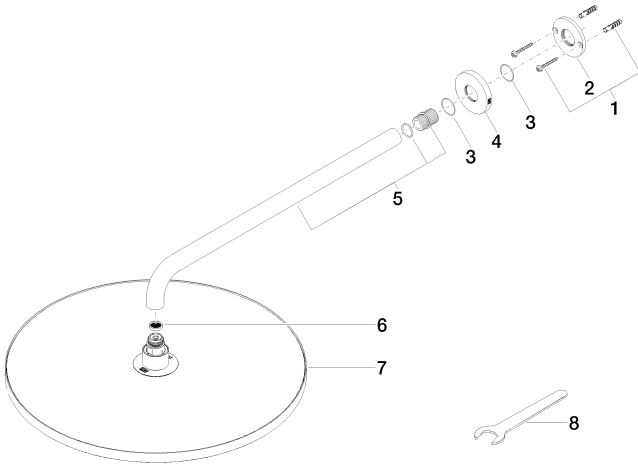
---

LGA\_38

# Rain shower with wall fixing FlowReduce 400 mm - Brushed Chrome

28 658 970    Product version from 4/1/2024

Parts for other  
finishes can be found  
here: [Chrome](#)



## Spare parts list

| No. | Item Number        | Name       | Quantity used | Delivery time |
|-----|--------------------|------------|---------------|---------------|
| 1   | 04 30 31 032 00 90 | fixing set | 1             | 2             |
| 2   | 09 17 20 120 90    | holder     | 1             | 2             |
| 3   | 09 14 10 150 90    | seal       | 2             | 2             |
| 4   | 09 27 97 015-93    | rosette    | 1             | 20            |
| 5   | 90 11 03 070 00-93 | pipe       | 1             | 20            |
| 6   | 09 23 01 075 90    | insert     | 1             | 2             |
| 7   | 90 12 05 090 20-93 | shower     | 1             | 20            |
| 8   | 90 30 09 069 00 90 | key        | 1             | 2             |