

## CL.1 Two-way diverter - Chrome

CL.1

29 126 705



- rotary diverter
  - hole diameter 37 mm
  - rosette 60 x 60 mm
  - 1/2" connection
  - max. flow 23.5 l/min at 3 bar flow pressure
- Not suitable for combining with Perfecto (12 614 970 90).**

Not suitable for combining with Perfecto (12 614 970 90).

### Required miscellaneous



Hose set -

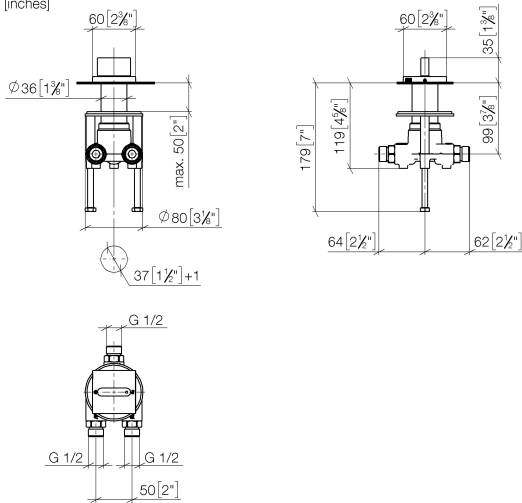
12 509 970 90

## CL.1 Two-way diverter - Chrome

CL.1

29 126 705

mm [inches]



### Flow rate chart



### Codes & Standards

ASME A112.18.1

cUPC

DIN 4109

ISO 3822

### Ü-Zeichen



## CL.1 Two-way diverter - Chrome

---

CL.1

29 126 705

### Certificates

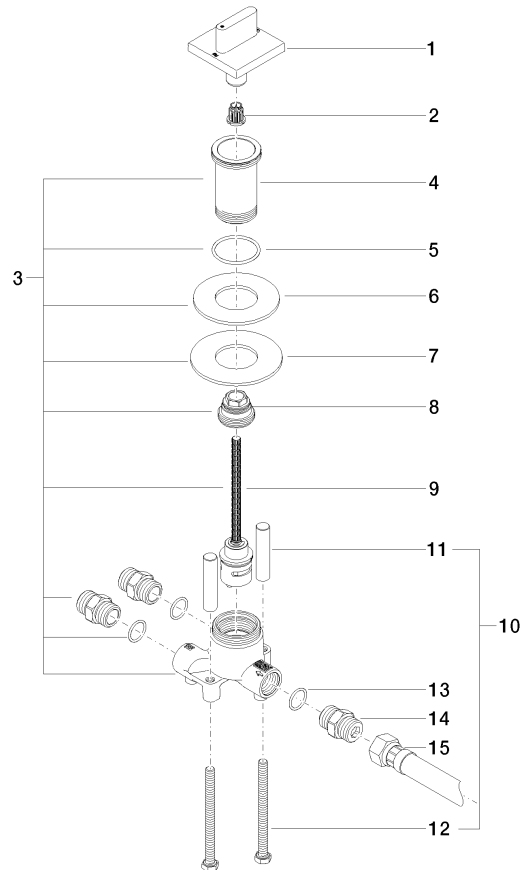
---

LGA\_18

IAPMO\_4976

29 126 705

**Product version from 3/9/2015**





## CL.1 Two-way diverter - Chrome

CL.1

29 126 705

### Spare parts list

#### Product version from 3/9/2015

No.	Item Number	Name	Quantity used	Delivery time
	90 20 70 052 01-00	handle	21	10