

## Two-way diverter for bath rim or tile edge installation - Champagne (22kt Gold) SERIES SPECIFIC

29 140 670 Product version from 6/30/2015



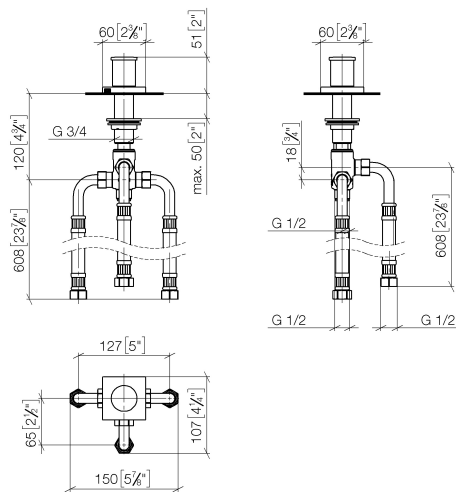
- automatic bath/shower diverter
- hole diameter 32 mm
- rosette 60 x 60 mm
- 1/2" connection
- max. flow 64.9 l/min at 3 bar flow pressure
- WRAS

	Champagne (22kt Gold)	29 140 670-47
	Chrome	29 140 670-00
	Brushed Platinum	29 140 670-06
	Platinum	29 140 670-08
	Dark Chrome	29 140 670-19
	Brushed Light Gold	29 140 670-27
	Brushed Durabronze (23kt Gold)	29 140 670-28
	Matte Black	29 140 670-33
	Brushed Champagne (22kt Gold)	29 140 670-46
	Brushed Chrome	29 140 670-93
	Brushed Dark Platinum	29 140 670-99

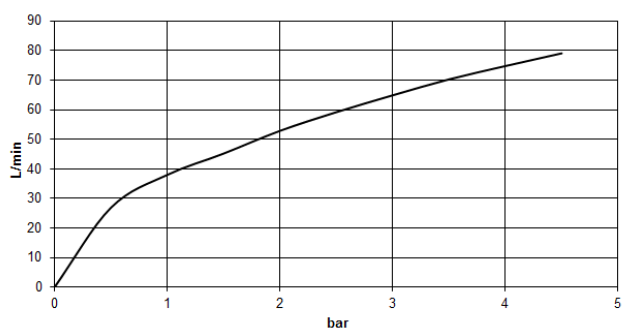
## Two-way diverter for bath rim or tile edge installation - Champagne (22kt Gold) SERIES SPECIFIC

29 140 670 Product version from 6/30/2015

mm [inches]



### Flow rate chart



### Codes & Standards

DIN 4109

ISO 3822

Ü-Zeichen



## Two-way diverter for bath rim or tile edge installation - Champagne (22kt Gold) SERIES SPECIFIC

---

29 140 670 Product version from 6/30/2015

Certificates and sustainability

---

LGA\_29

## Two-way diverter for bath rim or tile edge installation - Champagne (22kt Gold) SERIES SPECIFIC

29 140 670 Product version from 6/30/2015

Parts for other  
finishes can be found  
here: [Chrome](#)



### Spare parts list

No.	Item Number	Name	Quantity used	Delivery time
	10 90 17 09 051 00 90	diverter	1.00	2
	5 09 27 67 006-47	rosette	1.00	30
	8 09 14 40 002 90	seal	1.00	2
	3 09 20 71 002-47	handle	1.00	30
	1 09 20 71 003-47	handle	1.00	30
	9 09 23 10 004 90	nut	1.00	2
	7 09 14 05 014 90	seal	1.00	2
	4 09 16 01 012-47	ring	1.00	30
	2 90 30 30 014 00 90	screw	1.00	2
	6 90 14 10 043 00 90	seal	1.00	2