

VAIA Wall-mounted valve cold water without pop-up waste - Brushed Dark Platinum


30 010 809



- 151mm projection
- fixed spout
- adapter with male thread 3/4"
- hole diameter 35 mm
- rosette Ø 60 mm
- max. flow 5.7 l/min
- lead-free
- This product can help a building meet the requirements of Green Building Rating Systems, e.g. LEED®, BREEAM®, DGNB
- WRAS

	Brushed Dark Platinum	30 010 809-99
	Chrome	30 010 809-00
	Brushed Platinum	30 010 809-06
	Platinum	30 010 809-08
	Dark Chrome	30 010 809-19
	Brushed Durabrass (23kt Gold)	30 010 809-28
	Brushed Bronze	30 010 809-42
	Brushed Champagne (22kt Gold)	30 010 809-46
	Champagne (22kt Gold)	30 010 809-47

Recommended miscellaneous

- 

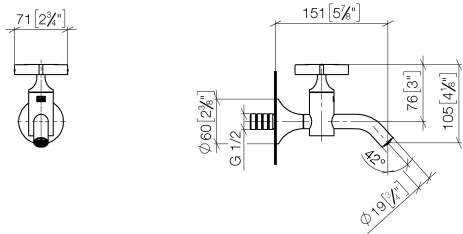
Concealed wall elbow -

 - min. recess depth mm
 - max. recess depth mm

35 085 970 90

VAIA Wall-mounted valve cold water without pop-up waste - Brushed Dark Platinum

30 010 809
mm [inches]



Flow rate chart



Codes & Standards

DIN 4109

ISO 3822

Scottish Water
Byelaws

UK Water Supply
Regulations

Ü-Zeichen



VAIA Wall-mounted valve cold water without pop-up waste - Brushed Dark Platinum

30 010 809

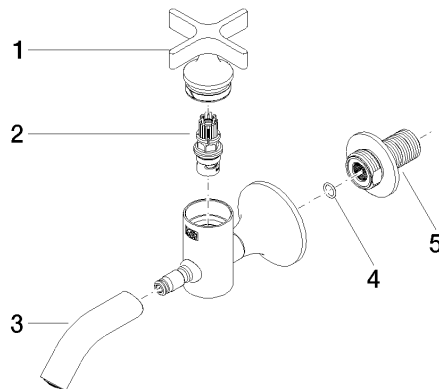
Certificates

LGA_18

WRAS_240102

**VAIA Wall-mounted valve cold water without pop-up waste - Brushed Dark
Platinum**

30 010 809



Spare parts list

No.	Item Number	Name	Quantity used	Delivery time
1	90 20 66 025 00-99	handle	1	20
2	90 90 03 175 00 90	top	1	2
3	90 28 22 381 00-99	spout	1	-
Spare part can no longer be ordered, please order the replacement item				
4	90 14 10 060 00 90	seal	1	2
5	09 24 03 269 90	nipple	1	2