


## VAIA POT FILLER Cold-water valve - Brushed Platinum

VAIA

30 805 809



- 500mm projection
- pivoting spout
- laminar flow
- cold water only
- max. flow 5.7 l/min at 3 bar flow pressure
- min. recess depth 125 mm
- max. recess depth 80 mm
- lead-free
- This product can help a building meet the requirements of Green Building Rating Systems, e.g. LEED®, BREEAM®, DGNB

|  |                               |               |
|--|-------------------------------|---------------|
|   | Brushed Platinum              | 30 805 809-06 |
|   | Chrome                        | 30 805 809-00 |
|   | Platinum                      | 30 805 809-08 |
|   | Durabrand (23kt Gold)         | 30 805 809-09 |
|   | Dark Chrome                   | 30 805 809-19 |
|   | Brushed Durabrand (23kt Gold) | 30 805 809-28 |
|   | Brushed Champagne (22kt Gold) | 30 805 809-46 |
|   | Champagne (22kt Gold)         | 30 805 809-47 |
|   | Brushed Chrome                | 30 805 809-93 |
|  | Brushed Dark Platinum         | 30 805 809-99 |

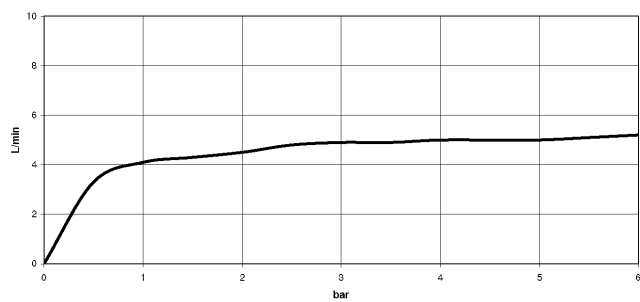
### Required miscellaneous

**POT FILLER Concealed wall elbow** 35 087 970 90



- min. recess depth 80 mm
- max. recess depth 125 mm

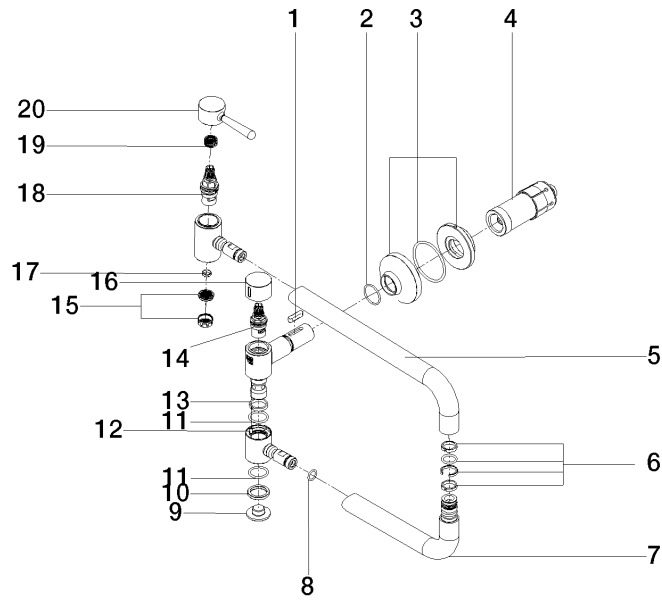
### Flow rate chart



### Certificates

LGA\_29748.

30 805 809





## VAIA POT FILLER Cold-water valve - Brushed Platinum

VAIA

30 805 809

### Spare parts list

| No.  | Item Number        | Name       | Quantity used | Delivery time |
|--|--------------------|------------|---------------|---------------|
| 1  | 90 16 04 001 00 90 | spring     | 1             | 2             |
| 2  | 90 14 10 063 00 90 | seal       | 1             | 2             |
| 3  | 90 27 87 039 00-06 | rosette    | 1             | 10            |
| 4  | 90 30 01 213 00 90 | connection | 1             | 2             |
| 5  | 09 28 22 208-06    | pipe       | 1             | 10            |
| 6  | 90 28 10 199 00 90 | gasket kit | 1             | -             |
| Spare part can no longer be ordered, please order the replacement item |                    |            |               |               |
| 7  | 04 28 22 221 10-06 | pipe       | 1             | 10            |
| 8  | 90 14 10 077 00 90 | seal       | 2             | 2             |
| 9  | 09 21 02 028-06    | lid        | 1             | 10            |
| 10   | 09 28 10 139 90    | ring       | 1             | 2             |
| 11   | 09 14 10 015 90    | seal       | 2             | 2             |
| 12   | 09 31 11 109 90    | pin        | 1             | 2             |
| 13   | 09 28 10 136 90    | ring       | 1             | 2             |
| 14   | 90 90 03 171 00 90 | top        | 1             | 2             |
| 15   | 09 29 03 089 90    | aerator    | 1             | 60            |
| 16   | 09 20 62 025-06    | handle     | 1             | 10            |
| 17   | 09 14 05 002 90    | seal       | 1             | 2             |
| 18   | 90 90 03 146 00 90 | top        | 1             | 2             |
| 19   | 90 12 12 232 00 90 | fixing cap | 1             | 2             |
| 20   | 90 20 80 051 00-06 | handle     | 1             | -             |
| Spare part can no longer be ordered, please order the replacement item |                    |            |               |               |