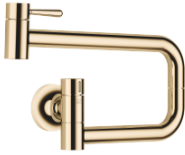


## VAIA POT FILLER Cold-water valve - Durabrand (23kt Gold)

VAIA

30 805 809



- 500mm projection
- pivoting spout
- laminar flow
- cold water only
- max. flow 5.7 l/min at 3 bar flow pressure
- min. recess depth 125 mm
- max. recess depth 80 mm
- lead-free
- This product can help a building meet the requirements of Green Building Rating Systems, e.g. LEED®, BREEAM®, DGNB

|   |                               |               |
|---|-------------------------------|---------------|
|   | Durabrand (23kt Gold)         | 30 805 809-09 |
|   | Chrome                        | 30 805 809-00 |
|   | Brushed Platinum              | 30 805 809-06 |
|   | Platinum                      | 30 805 809-08 |
|   | Dark Chrome                   | 30 805 809-19 |
|   | Brushed Durabrand (23kt Gold) | 30 805 809-28 |
|   | Brushed Champagne (22kt Gold) | 30 805 809-46 |
|   | Champagne (22kt Gold)         | 30 805 809-47 |
|   | Brushed Chrome                | 30 805 809-93 |
|  | Brushed Dark Platinum         | 30 805 809-99 |

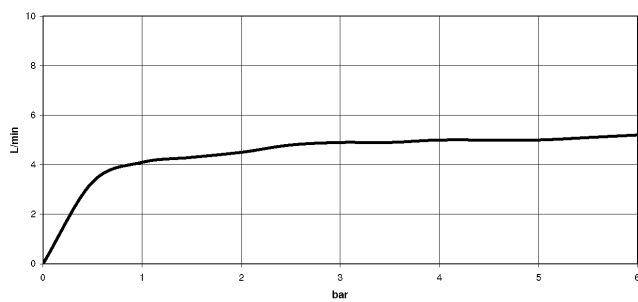
### Required miscellaneous

**POT FILLER Concealed wall elbow** 35 087 970 90



- max. recess depth 125 mm
- min. recess depth 80 mm

### Flow rate chart



### Codes & Standards

DIN 4109

ISO 3822

Ü-Zeichen



## VAIA POT FILLER Cold-water valve - Durabross (23kt Gold)

---

VAIA

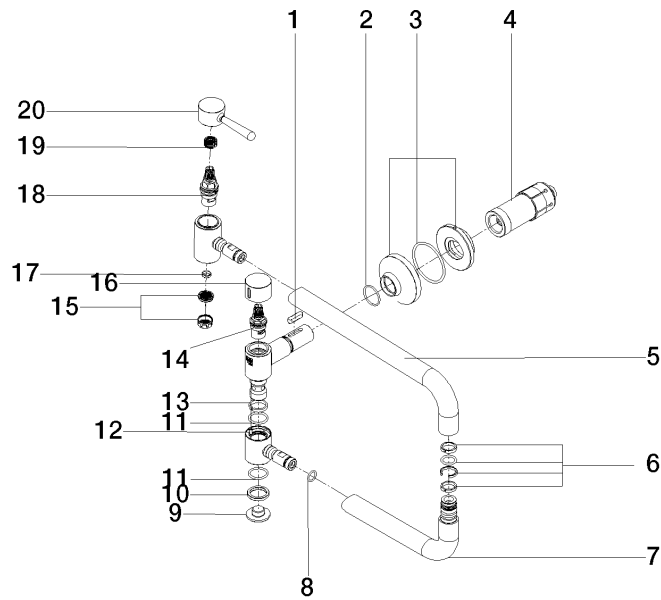
30 805 809

Certificates

---

LGA\_29

**Product version from 7/1/2023**





## VAIA POT FILLER Cold-water valve - Durabrass (23kt Gold)

VAIA

30 805 809

### Spare parts list

#### Product version from 7/1/2023

| No. | Item Number        | Name   | Quantity used | Delivery time |
|-----|--------------------|--------|---------------|---------------|
|     | 90 16 04 001 00 90 | spring | 22            | 2             |