

## TARA Wall-mounted bridge mixer with extending spout - Brushed Chrome

TARA

31 151 892



- 365-545mm projection
- pivoting spout
- laminar flow
- 1/2" connection
- max. flow 8.3 l/min at 3 bar flow pressure
- lead-free
- This product can help a building meet the requirements of Green Building Rating Systems, e.g. LEED®, BREEAM®, DGNB

|                                                                                     |                               |               |
|-------------------------------------------------------------------------------------|-------------------------------|---------------|
|   | Brushed Chrome                | 31 151 892-93 |
|   | Chrome                        | 31 151 892-00 |
|   | Brushed Platinum              | 31 151 892-06 |
|   | Platinum                      | 31 151 892-08 |
|   | Durabrand (23kt Gold)         | 31 151 892-09 |
|   | Dark Chrome                   | 31 151 892-19 |
|   | Brushed Durabrand (23kt Gold) | 31 151 892-28 |
|   | Brushed Champagne (22kt Gold) | 31 151 892-46 |
|   | Champagne (22kt Gold)         | 31 151 892-47 |
|  | Brushed Dark Platinum         | 31 151 892-99 |

31 151 892

mm [inches]

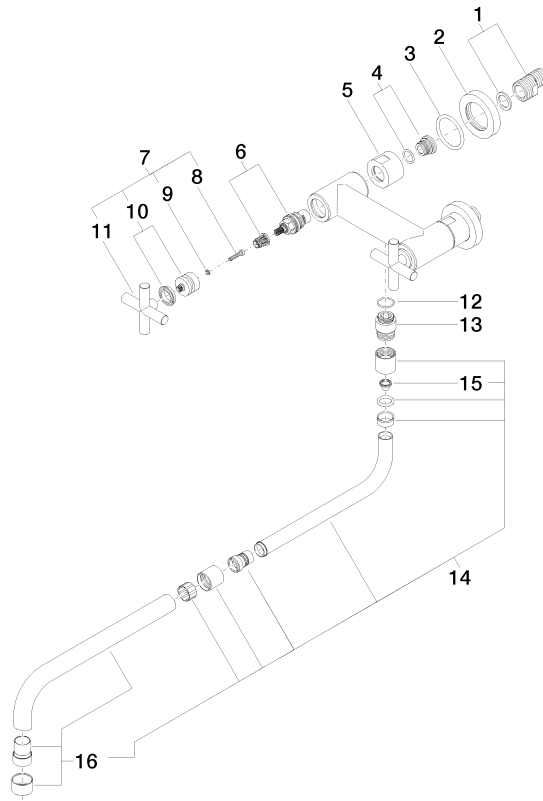


**Flow rate chart**



31 151 892

Parts for other  
finishes can be found  
here: [Chrome](#)





## TARA Wall-mounted bridge mixer with extending spout - Brushed Chrome

TARA

31 151 892

### Spare parts list

| No. | Item Number        | Name       | Quantity used | Delivery time |
|-----|--------------------|------------|---------------|---------------|
|     | 04 11 04 003 00 90 | connection | 27            | 2             |