

## META Single-lever basin mixer with pop-up waste - Chrome

META

33 501 660



- 125mm projection
- fixed spout
- circular, air-enriched flow
- height of mixer 133 mm
- height up to aerator 52 mm
- hole diameter 35 mm
- 2x screw-in M 8 x 1 pressure hose, leak-tested
- max. flow 5.7 l/min
- lead-free
- This product can help a building meet the requirements of Green Building Rating Systems, e.g. LEED®, BREEAM®, DGNB
- WRAS 2003058

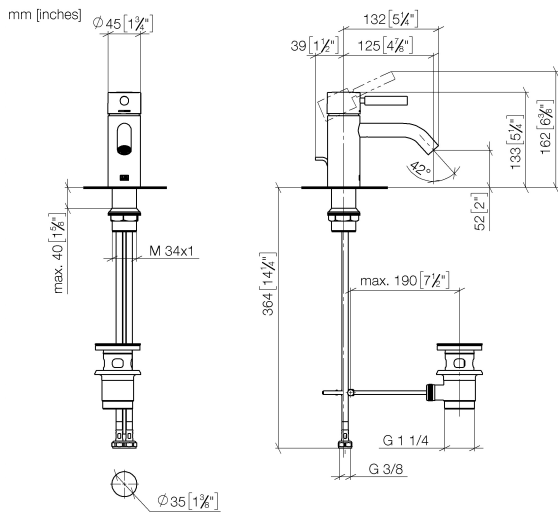
Only suitable for basins with an overflow.

|  |                               |               |
|--|-------------------------------|---------------|
|    | Chrome                        | 33 501 660-00 |
|    | Brushed Platinum              | 33 501 660-06 |
|    | Dark Chrome                   | 33 501 660-19 |
|    | Light Gold                    | 33 501 660-26 |
|    | Brushed Light Gold            | 33 501 660-27 |
|    | Matte Black                   | 33 501 660-33 |
|    | Brushed Bronze                | 33 501 660-42 |
|    | Brushed Champagne (22kt Gold) | 33 501 660-46 |
|    | Champagne (22kt Gold)         | 33 501 660-47 |
|   | Brushed Chrome                | 33 501 660-93 |
|  | Brushed Dark Platinum         | 33 501 660-99 |

## META Single-lever basin mixer with pop-up waste - Chrome

## META

33 501 660



### Flow rate chart



## Codes & Standards

DIN 4109

EN 817

ISO 3822

## Scottish Water Byelaws

## UK Water Supply Regulations

## Ü-Zeichen



## META Single-lever basin mixer with pop-up waste - Chrome

---

META

33 501 660

### Certificates

---

WRAS\_2003

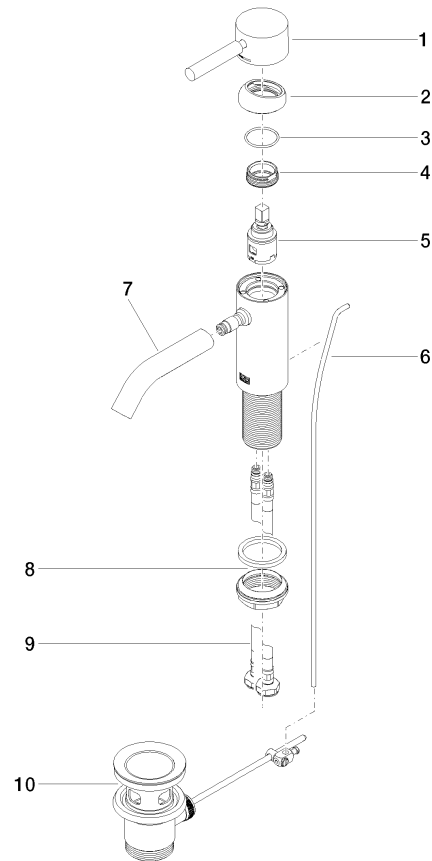
LGA\_29

DVGW\_DW-  
6506DN0

33 501 660

Product version up to 1/23/2020

**Product version from 1/23/2020**





## META Single-lever basin mixer with pop-up waste - Chrome

META

33 501 660

### Spare parts list

Product version up to 1/23/2020

#### Product version from 1/23/2020

| No. | Item Number        | Name   | Quantity used | Delivery time |
|-----|--------------------|--------|---------------|---------------|
|     | 90 20 66 002 00-00 | handle | 11            | 10            |