

## META Single-lever basin mixer without pop-up waste - Brushed Champagne (22kt Gold)

META

33 505 661 Product version from 1/23/2020 to 4/1/2025



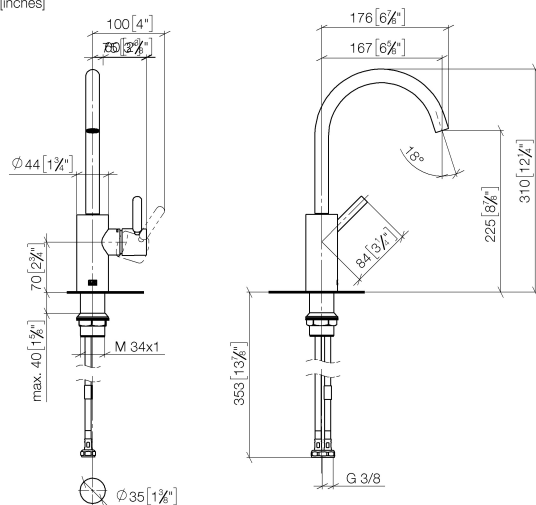
- 167mm projection
- pivotable spout 360°
- circular, air-enriched flow
- height of mixer 310 mm
- height up to aerator 225 mm
- hole diameter 35 mm
- 2x screw-in M 8 x 1 pressure hose, leak-tested
- max. flow 5.7 l/min
- lead-free
- This product can help a building meet the requirements of Green Building Rating Systems, e.g. LEED®, BREEAM®, DGNB
- WRAS

	Brushed Champagne (22kt Gold)	33 505 661-46
	Chrome	33 505 661-00
	Brushed Platinum	33 505 661-06
	Dark Chrome	33 505 661-19
	Light Gold	33 505 661-26
	Brushed Light Gold	33 505 661-27
	Matte Black	33 505 661-33
	Brushed Dark Brass	33 505 661-39
	Brushed Bronze	33 505 661-42
	Champagne (22kt Gold)	33 505 661-47
	Brushed Chrome	33 505 661-93
	Brushed Dark Platinum	33 505 661-99

# META Single-lever basin mixer without pop-up waste - Brushed Champagne (22kt Gold)

META

33 505 661 Product version from 1/23/2020 to 4/1/2025  
mm [inches]



## Flow rate chart



## Codes & Standards

DIN 4109

ISO 3822

Ü-Zeichen



## META Single-lever basin mixer without pop-up waste - Brushed Champagne (22kt Gold)

---

META

33 505 661 Product version from 1/23/2020 to 4/1/2025

Certificates and sustainability

---

LGA\_29

## META Single-lever basin mixer without pop-up waste - Brushed Champagne (22kt Gold)

META

33 505 661 Product version from 1/23/2020 to 4/1/2025

Parts for other  
finishes can be found  
here: [Chrome](#)

