



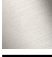




## LISSÉ Single-lever basin mixer with raised base without pop-up waste - Dark Chrome

LISSÉ

33 526 845 Product version from 5/3/2021



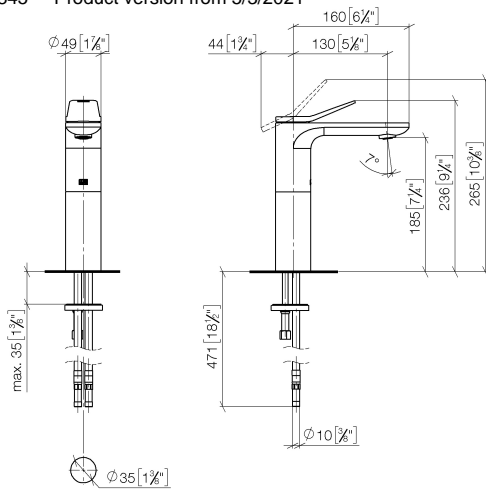
- 130mm projection
- fixed spout
- circular, air-enriched flow
- height of mixer 236 mm
- height up to aerator 185 mm
- hole diameter 35 mm
- 2x screw-in M 8 x 1 pressure hose, leak-tested
- max. flow 5.7 l/min
- lead-free
- This product can help a building meet the requirements of Green Building Rating Systems, e.g. LEED®, BREEAM®, DGNB
- WRAS

|   |                       |               |
|---|-----------------------|---------------|
|  | Dark Chrome           | 33 526 845-19 |
|  | Chrome                | 33 526 845-00 |
|  | Brushed Platinum      | 33 526 845-06 |
|  | Brushed Light Gold    | 33 526 845-27 |
|  | Matte Black           | 33 526 845-33 |
|  | Brushed Chrome        | 33 526 845-93 |
|  | Brushed Dark Platinum | 33 526 845-99 |

# LISSÉ Single-lever basin mixer with raised base without pop-up waste - Dark Chrome

LISSÉ

33 526 845 Product version from 5/3/2021  
mm [inches]



Flow rate chart



## Codes & Standards

DIN 4109

Executive Order  
no. 1007

ISO 3822

Scottish Water  
Byelaws

UK Water Supply  
Regulations

Ü-Zeichen



LISSE Single-lever basin mixer with raised base without pop-up waste - Dark Chrome

LISSE

33 526 845 Product version from 5/3/2021

Certificates and sustainability

LGA\_29

GDV\_0400

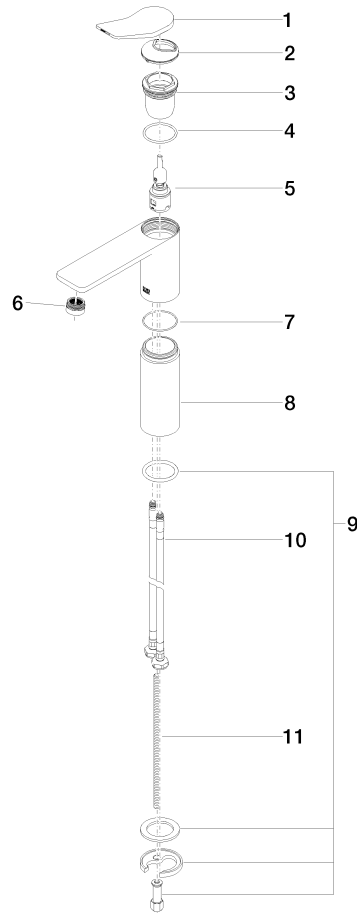
WRAS\_250402

## LISSÉ Single-lever basin mixer with raised base without pop-up waste - Dark Chrome

LISSÉ

33 526 845 Product version from 5/3/2021

Parts for other  
finishes can be found  
here: [Chrome](#)



### Spare parts list

| No. | Item Number           | Name       | Quantity used | Delivery time |
|-----|-----------------------|------------|---------------|---------------|
|     | 9 04 30 11 038 75 90  | fixing set | 1.00          | 2             |
|     | 4 09 14 10 038 90     | seal       | 1.00          | 2             |
|     | 6 90 23 01 161 01-19  | aerator    | 1.00          | 20            |
|     | 1 90 20 84 020 00-19  | handle     | 1.00          | 20            |
|     | 8 09 28 22 308-19     | sleeve     | 1.00          | 60            |
|     | 7 09 14 10 108 90     | seal       | 1.00          | 2             |
|     | 10 04 30 04 101 00 90 | hose       | 2.00          | 2             |
|     | 3 09 23 10 123 90     | nut        | 1.00          | 2             |
|     | 2 09 28 30 034 90     | cover      | 1.00          | 2             |
|     | 5 90 15 05 042 01 90  | cartridge  | 1.00          | 2             |
|     | 11 09 31 11 000 90    | pin        | 1.00          | 2             |