

## LISSE Single-lever basin mixer with raised base without pop-up waste - Matte Black



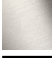




LISSE

33 537 845 Product version from 3/9/2016 to 10/31/2018



- 215mm projection
- fixed spout
- circular, air-enriched flow
- height of mixer 292 mm
- height up to aerator 241 mm
- hole diameter 35 mm
- 2x screw-in M 8 x 1 pressure hose, leak-tested
- max. flow 5.7 l/min
- lead-free
- This product can help a building meet the requirements of Green Building Rating Systems, e.g. LEED®, BREEAM®, DGNB
- WRAS

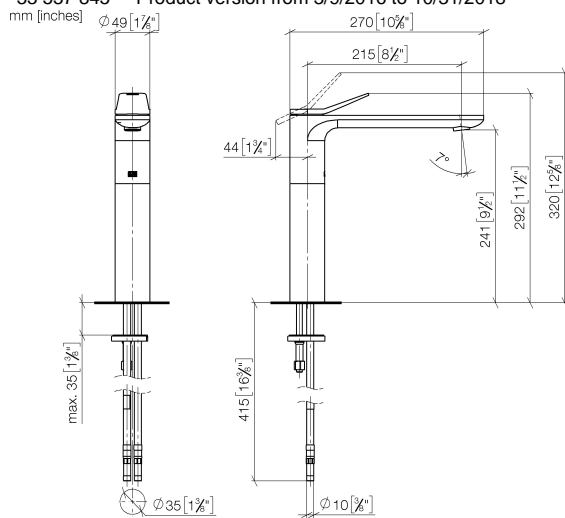
for use on countertop bowls

|   |                       |               |
|---|-----------------------|---------------|
|  | Matte Black           | 33 537 845-33 |
|  | Chrome                | 33 537 845-00 |
|  | Brushed Platinum      | 33 537 845-06 |
|  | Dark Chrome           | 33 537 845-19 |
|  | Brushed Light Gold    | 33 537 845-27 |
|  | Brushed Chrome        | 33 537 845-93 |
|  | Brushed Dark Platinum | 33 537 845-99 |

# LISSÉ Single-lever basin mixer with raised base without pop-up waste - Matte Black

LISSÉ

33 537 845 Product version from 3/9/2016 to 10/31/2018



Flow rate chart



## Codes & Standards

DIN 4109

Executive Order  
no. 1007

ISO 3822

Scottish Water  
Byelaws

UK Water Supply  
Regulations

Ü-Zeichen



## LISSE Single-lever basin mixer with raised base without pop-up waste - Matte Black

LISSE

---

33 537 845 Product version from 3/9/2016 to 10/31/2018

Certificates and sustainability

---

LGA\_29

GDV\_0400

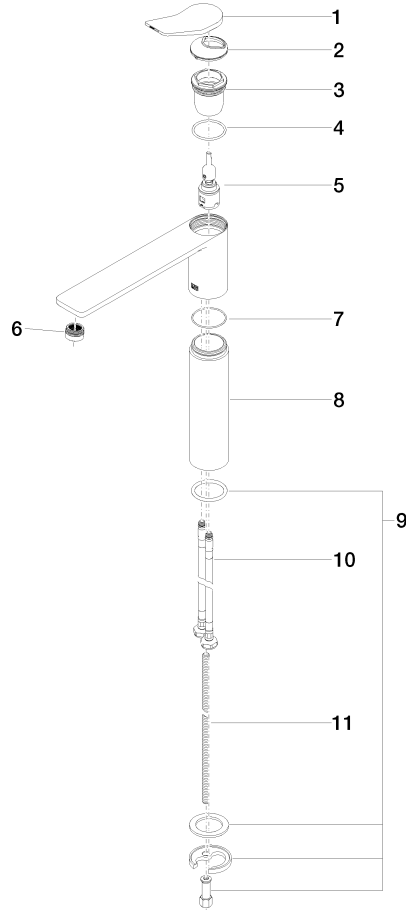
WRAS\_250402

## LISSE Single-lever basin mixer with raised base without pop-up waste - Matte Black

LISSE

33 537 845 Product version from 3/9/2016 to 10/31/2018

Parts for other  
finishes can be found  
here: [Chrome](#)



### Spare parts list

| No. | Item Number        | Name       | Quantity used | Delivery time |
|-----|--------------------|------------|---------------|---------------|
| 3   | 09 23 10 123 90    | nut        | 1.00          | 2             |
| 8   | 09 28 22 306-33    | sleeve     | 1.00          | 30            |
| 7   | 09 14 10 108 90    | seal       | 1.00          | 2             |
| 6   | 90 23 01 161 01-33 | aerator    | 1.00          | 30            |
| 1   | 90 20 84 020 00-33 | handle     | 1.00          | 30            |
| 5   | 90 15 05 042 01 90 | cartridge  | 1.00          | 2             |
| 2   | 09 28 30 034 90    | cover      | 1.00          | 2             |
| 10  | 04 30 04 101 00 90 | hose       | 2.00          | 2             |
| 4   | 09 14 10 038 90    | seal       | 1.00          | 2             |
| 9   | 04 30 11 038 75 90 | fixing set | 1.00          | 2             |
| 11  | 09 31 11 095 90    | pin        | 1.00          | 2             |