

## TARA ULTRA Profi single-lever mixer - Brushed Chrome




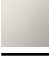


TARA ULTRA

33 860 875



- 240mm projection
- pivotable 360°
- air-enriched flow and spray flow
- height of mixer 685 mm
- height up to aerator 129 mm
- hole diameter 35 mm
- sprayface with anti-scaling system
- max. flow 8 l/min at 3 bar flow pressure
- lead-free
- This product can help a building meet the requirements of Green Building Rating Systems, e.g. LEED®, BREEAM®, DGNB

Intrinsic protection against back flow.

	Brushed Chrome	33 860 875-93
	Chrome	33 860 875-00
	Brushed Platinum	33 860 875-06
	Platinum	33 860 875-08
	Dark Chrome	33 860 875-19
	Brushed Dark Platinum	33 860 875-99

### Recommended miscellaneous

**Dispenser without rosette -  
Brushed Chrome**

82 424 970-93



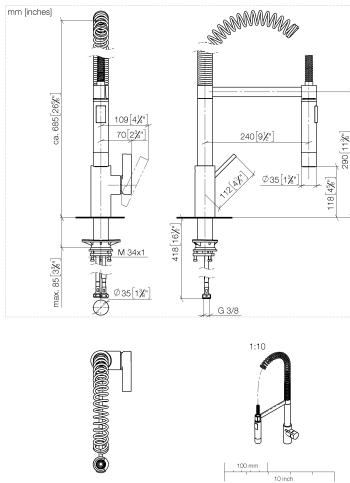
### Recommended miscellaneous

**Strainer waste with control handle  
- Brushed Chrome**

10 712 970-93



33 860 875



### Flow rate chart



### Codes & Standards

EN 1717



## TARA ULTRA Profi single-lever mixer - Brushed Chrome

---

TARA ULTRA

33 860 875

### Certificates

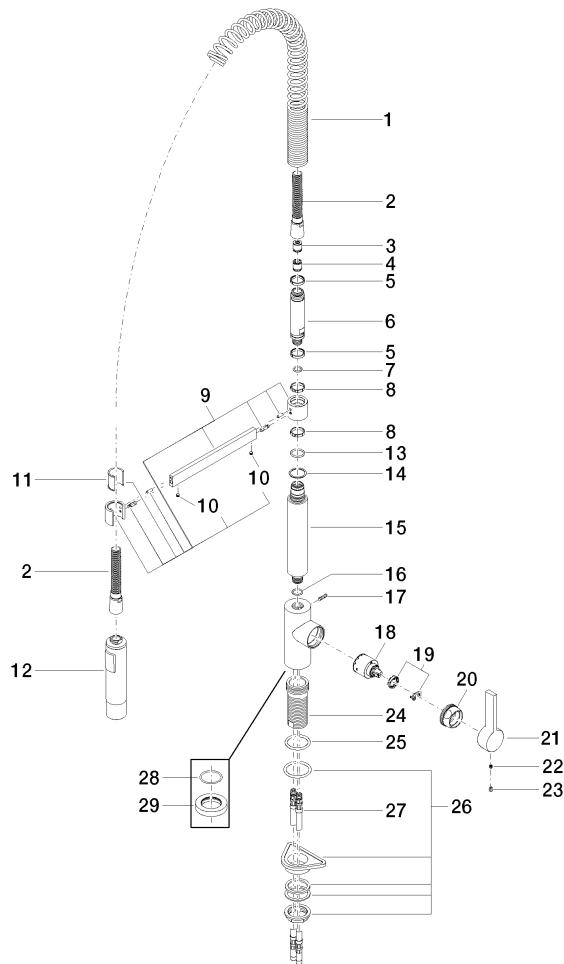
---

Belgaqua\_22\_277\_2

33 860 875

**Product version from 6/1/2022**

Parts for other  
finishes can be found  
here: [Chrome](#)





## **Spare parts list**

**Product version from 6/1/2022**