

TARA Single-lever mixer Pull-down with spray function - Chrome

TARA

33 870 888 Product version from 2/1/2023 to 10/30/2024



- 240mm projection
- pivotable spout 360°
- Optional swivel limiter available with swivel limiter set 12 823 970 90
- laminar and spray flow
- 1800 mm metal shower hose
- sprayface with anti-scaling system
- max. flow 10.4 l/min at 3 bar flow pressure
- lead-free
- Flow modes can be changed while the water is running
- This product can help a building meet the requirements of Green Building Rating Systems, e.g. LEED®, BREEAM®, DGNB

Intrinsic protection against back flow.

| | | |
|--|--------------------------------|---------------|
| | Chrome | 33 870 888-00 |
| | Brushed Platinum | 33 870 888-06 |
| | Platinum | 33 870 888-08 |
| | Durabronze (23kt Gold) | 33 870 888-09 |
| | Dark Chrome | 33 870 888-19 |
| | Brushed Durabronze (23kt Gold) | 33 870 888-28 |
| | Matte Black | 33 870 888-33 |
| | Brushed Bronze | 33 870 888-42 |
| | Brushed Champagne (22kt Gold) | 33 870 888-46 |
| | Champagne (22kt Gold) | 33 870 888-47 |
| | Brushed Chrome | 33 870 888-93 |
| | Brushed Dark Platinum | 33 870 888-99 |

Recommended miscellaneous

Swivel limitation set -

12 823 970 90



Recommended miscellaneous

Dispenser with rosette - Chrome

82 444 970-00



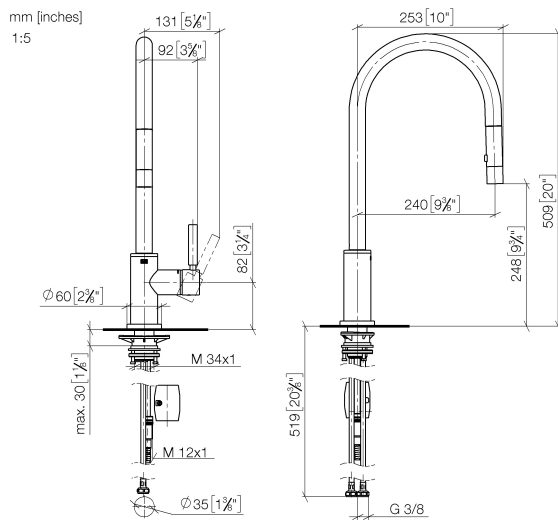
Recommended miscellaneous

Strainer waste with control handle - Chrome

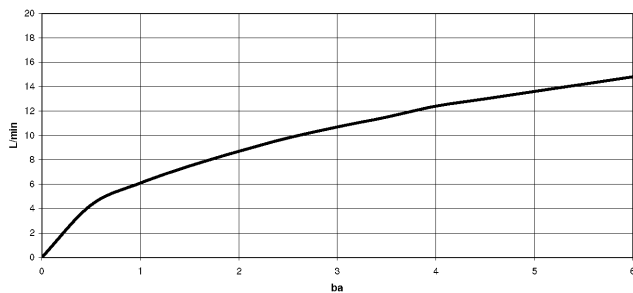
10 710 970-00



33 870 888 Product version from 2/1/2023 to 10/30/2024



Flow rate chart



Codes & Standards

DIN 4109

EN 1717

ISO 3822

Ü-Zeichen



TARA Single-lever mixer Pull-down with spray function - Chrome

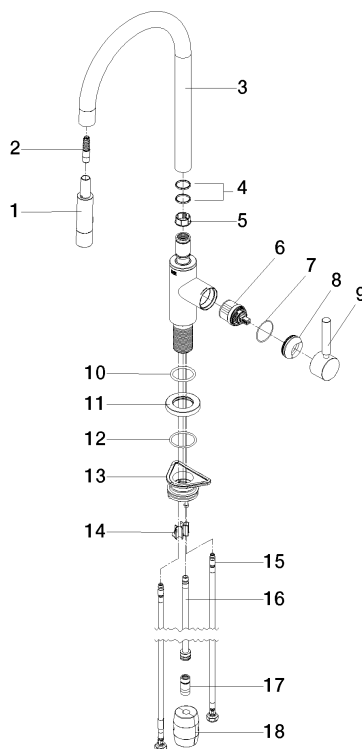
TARA

33 870 888 Product version from 2/1/2023 to 10/30/2024

Certificates and sustainability

LGA_38

Belgaqua_24-005-2



Spare parts list

| No. | Item Number | Name | Quantity used | Delivery time |
|-----|-----------------------|-------------|---------------|---------------|
| | 5 09 18 40 186 90 | sleeve | 1.00 | 2 |
| | 4 09 28 10 160 90 | ring | 2.00 | 2 |
| | 3 90 28 22 304 00-00 | spout | 1.00 | 10 |
| | 2 04 30 02 120 00-00 | hose | 1.00 | 10 |
| | 8 09 28 30 030-00 | cover | 1.00 | 10 |
| | 12 09 14 10 050 90 | seal | 1.00 | 2 |
| | 1 90 12 11 148 00-00 | shower | 1.00 | 60 |
| | 10 09 14 10 036 90 | seal | 1.00 | 2 |
| | 17 90 24 03 253 00 90 | adaptor | 1.00 | 2 |
| | 11 90 27 22 047 00-00 | rosette | 1.00 | 10 |
| | 7 09 14 10 190 90 | seal | 1.00 | 2 |
| | 9 90 20 66 027 00-00 | handle | 1.00 | 10 |
| | 13 04 30 11 040 00 90 | fixing set | 1.00 | 2 |
| | 15 04 30 04 101 00 90 | hose | 2.00 | 2 |
| | 16 04 28 20 067 00 90 | pipe | 1.00 | 2 |
| | 18 04 21 50 010 00 90 | accessories | 1.00 | 2 |
| | 14 09 20 93 056 90 | insert | 1.00 | 2 |
| | 6 90 15 05 064 05 90 | cartridge | 1.00 | 2 |