




EDITION PRO Shower thermostat for wall mounting - Brushed Chrome

34 442 626



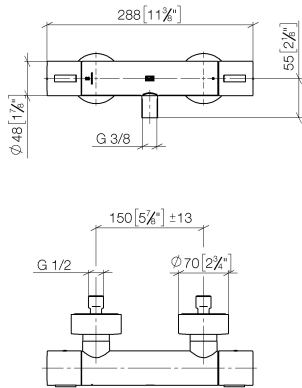
- 3/8" shower outlet
 - slide-on rosettes Ø 70 mm
 - 1/2" connection
 - gauge 150 mm - 13 mm
 - with volume control
 - WRAS
- Intrinsic protection against back flow.

	Brushed Chrome	34 442 626-93
	Chrome	34 442 626-00
	Matte Black	34 442 626-33

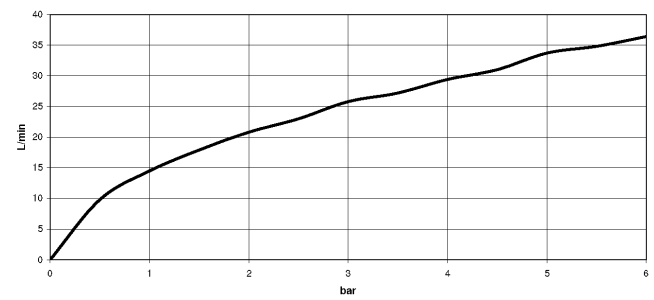
EDITION PRO Shower thermostat for wall mounting - Brushed Chrome

34 442 626

mm [inches]



Flow rate chart



Codes & Standards

DIN 4109	EN 1717	ISO 3822	Scottish Water Byelaws
UK Water Supply Regulations	Ü-Zeichen		



EDITION PRO Shower thermostat for wall mounting - Brushed Chrome

34 442 626

Certificates

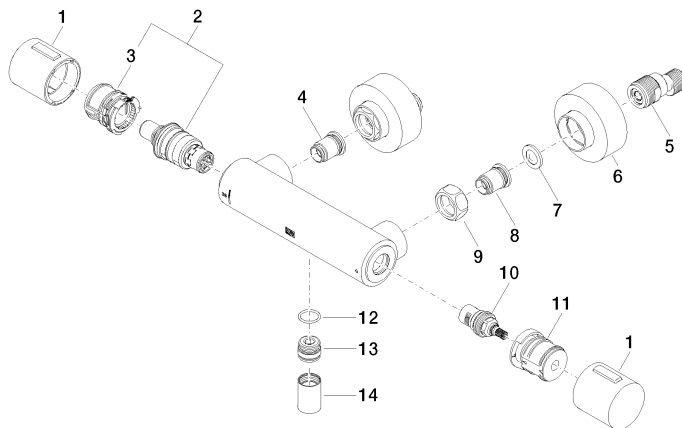
Belgaqua_21-384-2 LGA_29

WRAS_2204

EDITION PRO Shower thermostat for wall mounting - Brushed Chrome

34 442 626

Parts for other
finishes can be found
here: [Chrome](#)



Spare parts list

No.	Item Number	Name	Quantity used	Delivery time
1	90 17 33 015 00-93	handle	2	20
2	90 15 02 070 00 90	cartridge	1	2
3	90 30 40 010 00 90	regulator	1	2
4	04 31 20 530 00 90	insert	1	2
5	04 11 04 030 00 90	connection	2	2
6	90 31 20 512 00-93	rosette	2	20
7	09 29 30 050 90	sieve	2	2
8	04 31 20 540 00 90	insert	1	2
9	09 24 77 008-00	nut	2	10
10	90 90 03 236 00 90	top	1	2
11	90 30 40 017 00 90	base	1	2
12	90 14 10 010 00 90	seal	1	2
13	09 31 20 511-93	nipple	1	20
14	90 21 02 069 00-93	cover	1	-

Spare part can no longer be ordered, please order the replacement item