


35 205 970 90


- female thread 1/2" connection
- dust cover
- anti-water packing




Required miscellaneous

	WATER POINTS Adapter plate - •adapter plate for mounting concealed rough parts 35 205 970 90 on the xGRID installation track.	12 305 970 90
---	---	---------------

Required miscellaneous

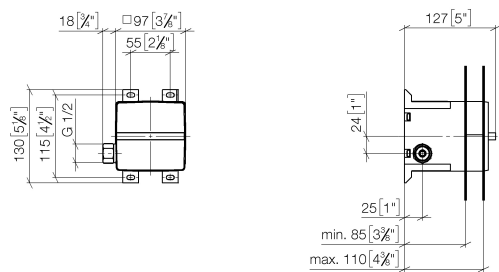
	xGRID Installation track 555 mm -	12 360 970 90
--	--	---------------

Recommended miscellaneous

	xGRID Attachment set for integrating in the dry wall construction -	12 340 970 90
---	--	---------------

35 205 970 90

mm [inches]



Codes & Standards

DIN 4109

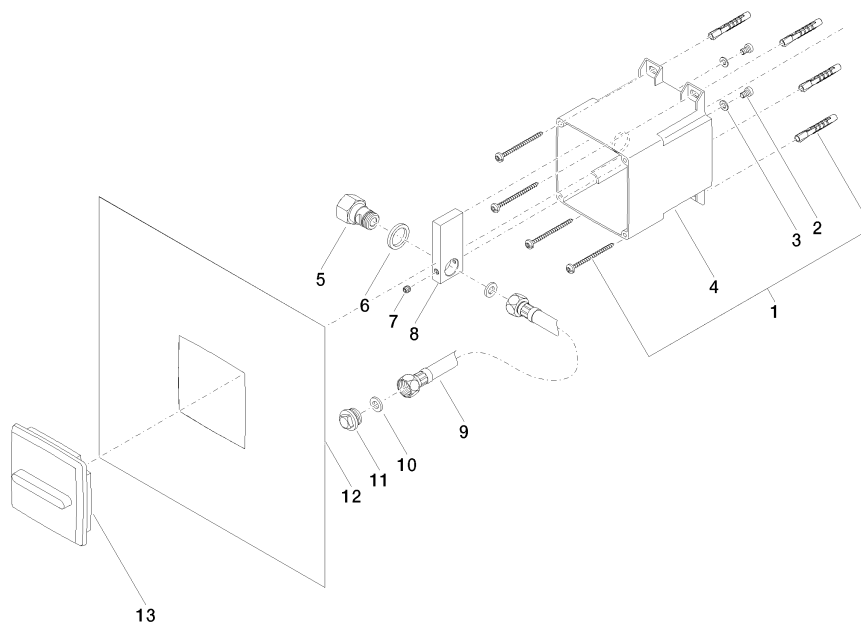
ISO 3822

Ü-Zeichen

Certificates and sustainability

LGA_18

35 205 970 90



Spare parts list

No.	Item Number	Name	Quantity used	Delivery time
9	09 30 03 002 90	hose	1.00	2
1	05 30 31 025 00 90	fixing set	2.00	2
7	09 31 11 049 90	pin	1.00	2
2	09 30 30 112 90	screw	2.00	2
11	09 31 20 042 90	plug	1.00	2
10	09 14 20 007 90	seal	2.00	2
13	09 11 01 096 90	cover	1.00	2
5	09 24 03 200 20 90	nipple	1.00	2
12	04 14 03 118 00 90	gasket kit	1.00	2
8	09 17 20 096 90	holder	1.00	2
6	09 14 05 001 90	seal	1.00	2
3	09 30 11 048 90	disc	2.00	2
4	09 11 11 032 90	accessories	1.00	60