

## TARA xTOOL Concealed thermostat without volume control 3/4" - Chrome

36 503 892 Product version from 5/1/2022



- cover plate Ø 123 mm
- temperature control handle with safety limit stop at 38°C
- thermostat cartridge
- WRAS

	Chrome	36 503 892-00
	Brushed Platinum	36 503 892-06
	Platinum	36 503 892-08
	Dark Chrome	36 503 892-19
	Brushed Durabrass (23kt Gold)	36 503 892-28
	Matte Black	36 503 892-33
	Brushed Bronze	36 503 892-42
	Brushed Champagne (22kt Gold)	36 503 892-46
	Champagne (22kt Gold)	36 503 892-47
	Brushed Chrome	36 503 892-93
	Brushed Dark Platinum	36 503 892-99

### Required miscellaneous



**xTOOL Concealed thermostat module without volume control -** 35 503 970 90

- min. recess depth mm
- max. recess depth mm

### Recommended miscellaneous



**xGRID Attachment set for integrating in the dry wall construction -** 12 340 970 90

### Required miscellaneous

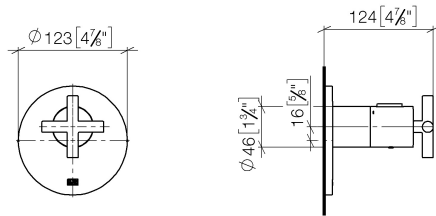


**xGRID Installation track 555 mm -** 12 360 970 90

## TARA xTOOL Concealed thermostat without volume control 3/4" - Chrome

36 503 892 Product version from 5/1/2022

mm [inches]



### Flow rate chart



### Codes & Standards

DIN 4109

ISO 3822

Scottish Water  
Byelaws

UK Water Supply  
Regulations

### Ü-Zeichen



TARA xTOOL Concealed thermostat without volume control 3/4" - Chrome

---

36 503 892    Product version from 5/1/2022

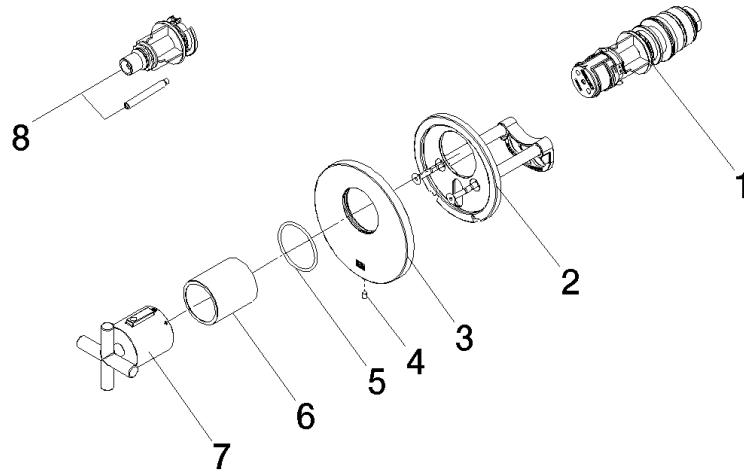
Certificates

---

WRAS_2011	LGA_29	LGA_29	LGA_29
-----------	--------	--------	--------

## TARA xTOOL Concealed thermostat without volume control 3/4" - Chrome

36 503 892 Product version from 5/1/2022



### Spare parts list

No.	Item Number	Name	Quantity used	Delivery time
1	90 15 02 063 00 90	cartridge	1	2
2	90 11 01 196 00 90	base	1	2
3	09 11 02 537-00	cover	1	10
4	09 31 11 048 90	pin	1	2
5	90 14 10 049 00 90	seal	1	2
6	90 21 02 112 00-00	sleeve	1	10
7	90 17 33 027 00-00	handle	1	10
8	12 178 970 90	Extension 46 mm -	1	2