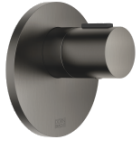


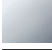

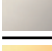




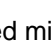
xTOOL Concealed thermostat without volume control 3/4" - Brushed Dark Platinum

META

36 503 979



- cover plate Ø 124 mm
- temperature control handle with safety limit stop at 38°C
- thermostat cartridge

| | | |
|---|-------------------------------|---------------|
|  | Brushed Dark Platinum | 36 503 979-99 |
|  | Chrome | 36 503 979-00 |
|  | Brushed Platinum | 36 503 979-06 |
|  | Platinum | 36 503 979-08 |
|  | Durabrand (23kt Gold) | 36 503 979-09 |
|  | Dark Chrome | 36 503 979-19 |
|  | Light Gold | 36 503 979-26 |
|  | Brushed Light Gold | 36 503 979-27 |
|  | Brushed Durabrand (23kt Gold) | 36 503 979-28 |
|  | Matte Black | 36 503 979-33 |
|  | Brushed Bronze | 36 503 979-42 |
|  | Brushed Champagne (22kt Gold) | 36 503 979-46 |
|  | Champagne (22kt Gold) | 36 503 979-47 |
|  | Brushed Chrome | 36 503 979-93 |

Required miscellaneous



xTOOL Concealed thermostat module without volume control - 35 503 970 90
 • min. recess depth 85 mm
 • max. recess depth 110 mm

Recommended miscellaneous



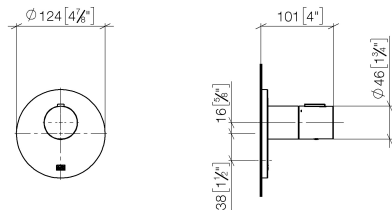
xGRID Attachment set for integrating in the dry wall construction - 12 340 970 90

Required miscellaneous

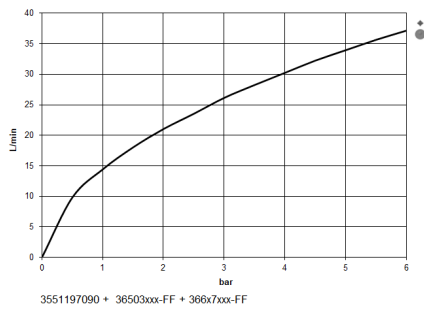


xGRID Installation track 555 mm - 12 360 970 90

36 503 979
mm [inches]



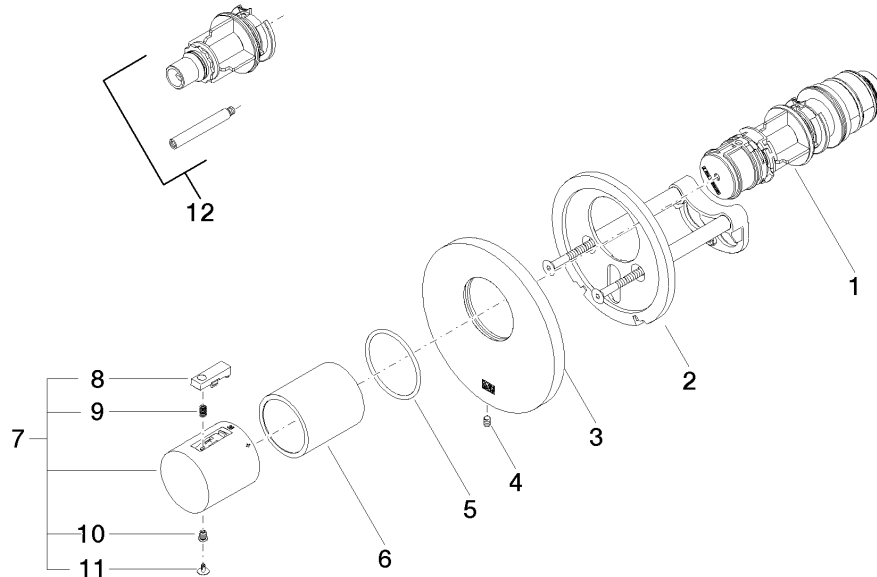
Flow rate chart



Certificates

WRAS_2011026. DVGW_DW- LGA_29930. LGA_29932.
6512DN0706.

36 503 979



Spare parts list

| No. | Item Number | Name | Quantity used | Delivery time |
|--|--------------------|-------------------|---------------|---------------|
| 1 | 90 15 02 065 00 90 | cartridge | 1 | 2 |
| 2 | 90 11 01 196 00 90 | base | 1 | 2 |
| 3 | 09 11 02 537-99 | cover | 1 | 30 |
| 4 | 09 31 11 048 90 | pin | 1 | 2 |
| 5 | 90 14 10 049 00 90 | seal | 1 | 2 |
| 6 | 90 21 02 112 00-99 | sleeve | 1 | - |
| Spare part can no longer be ordered, please order the replacement item | | | | |
| 7 | 90 17 33 004 00-99 | handle | 1 | 30 |
| 8 | 90 21 33 011 00-13 | handle | 1 | 2 |
| 9 | 90 16 02 027 00 90 | spring | 1 | 2 |
| 10 | 90 30 30 136 00 90 | screw | 1 | 2 |
| 11 | 90 31 20 049 00-13 | plug | 1 | 30 |
| 12 | 12 178 970 90 | Extension 46 mm - | 1 | 2 |