


WATER FAN vertical Concealed body spray - Chrome

SERIES-VARIOUS

36 513 979
Product version from 4/1/2024



- AQUAPRESSURE FLOW, max. flow rate 10 l/min (at 3 bar)
- water jet adjustable
- cover plate 240 x 60 mm
- 1/2" connection
- WRAS

	Chrome	36 513 979-00
	Brushed Platinum	36 513 979-06
	Platinum	36 513 979-08
	Dark Chrome	36 513 979-19
	Light Gold	36 513 979-26
	Brushed Light Gold	36 513 979-27
	Brushed Durabronze (23kt Gold)	36 513 979-28
	Matte Black	36 513 979-33
	Brushed Dark Brass	36 513 979-39
	Brushed Bronze	36 513 979-42
	Brushed Champagne (22kt Gold)	36 513 979-46
	Champagne (22kt Gold)	36 513 979-47
	Brushed Chrome	36 513 979-93
	Brushed Dark Platinum	36 513 979-99

Required miscellaneous



- Concealed wall installation box -
35 206 970 90

 - min. recess depth 100 mm
 - max. recess depth 173 mm

Recommended miscellaneous



- xGRID Attachment set for integrating in the dry wall construction -
12 340 970 90

Required miscellaneous



- xGRID Installation track 555 mm -
12 360 970 90

mm [inches]



Flow rate chart



Trajectory diagram



Codes & Standards

DIN 4109

ISO 3822

Scottish Water
Byelaws

UK Water Supply
Regulations

Ü-Zeichen



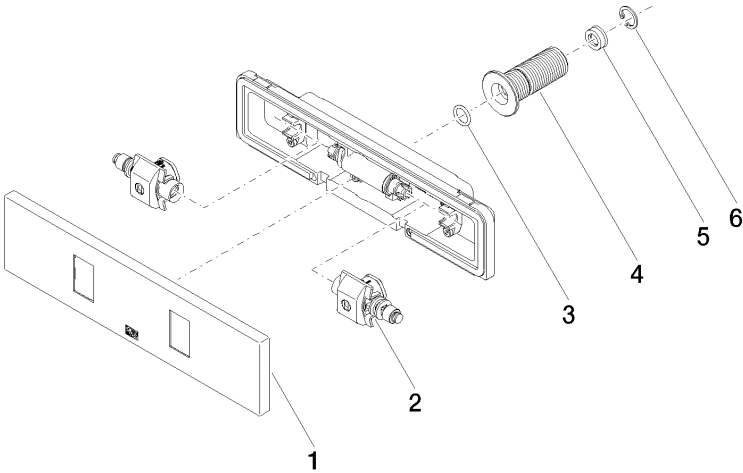
WATER FAN vertical Concealed body spray - Chrome

SERIES-VARIOUS

36 513 979 Product version from 4/1/2024

Certificates and sustainability

LGA_29	WRAS_2005	WRAS_250602
--------	-----------	-------------



Spare parts list

No.	Item Number	Name	Quantity used	Delivery time
6	09 16 01 014 90	ring	1.00	2
3	09 14 10 003 90	seal	1.00	2
5	09 23 01 134 90	flow reducer	1.00	2
1	90 27 99 002 00-00	insert	1.00	10
2	90 31 10 013 00 90	insert	1.00	2
4	09 24 05 015 90	nipple	1.00	2