

36 607 371

- WRAS 2011026, 2010066

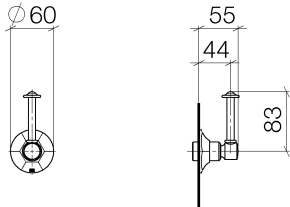




MADISON Wall valve clockwise closing 1/2" - Brushed Durabron (23kt Gold)

MADISON

36 607 371

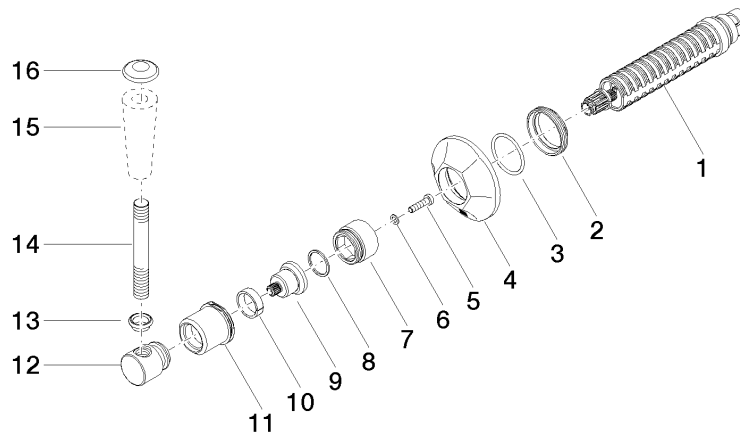


Codes & Standards

DIN 4109	EN 1111	EN 200	ISO 3822
Scottish Water Byelaws	UK Water Supply Regulations	Ü-Zeichen	

Certificates

DVGW_DW- 6501DN0	WRAS_2010	LGA_29	LGA_29	DVGW_DW- 6512DN0
WRAS_2011				





MADISON Wall valve clockwise closing 1/2" - Brushed Durabron (23kt Gold)

MADISON

36 607 371

Spare parts list