

TARA Wall valve clockwise closing 1/2" - Chrome

TARA

36 607 892


Product version up to 10/27/2020

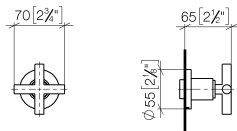
- rosette Ø 55 mm
- head part with cut-to-length spindle and sleeve
- WRAS



|   |                               |               |
|---|-------------------------------|---------------|
|    | Chrome                        | 36 607 892-00 |
|    | Brushed Platinum              | 36 607 892-06 |
|    | Platinum                      | 36 607 892-08 |
|    | Dark Chrome                   | 36 607 892-19 |
|    | Brushed Durabrass (23kt Gold) | 36 607 892-28 |
|    | Matte Black                   | 36 607 892-33 |
|    | Brushed Bronze                | 36 607 892-42 |
|    | Brushed Champagne (22kt Gold) | 36 607 892-46 |
|    | Champagne (22kt Gold)         | 36 607 892-47 |
|   | Brushed Chrome                | 36 607 892-93 |
|  | Brushed Dark Platinum         | 36 607 892-99 |

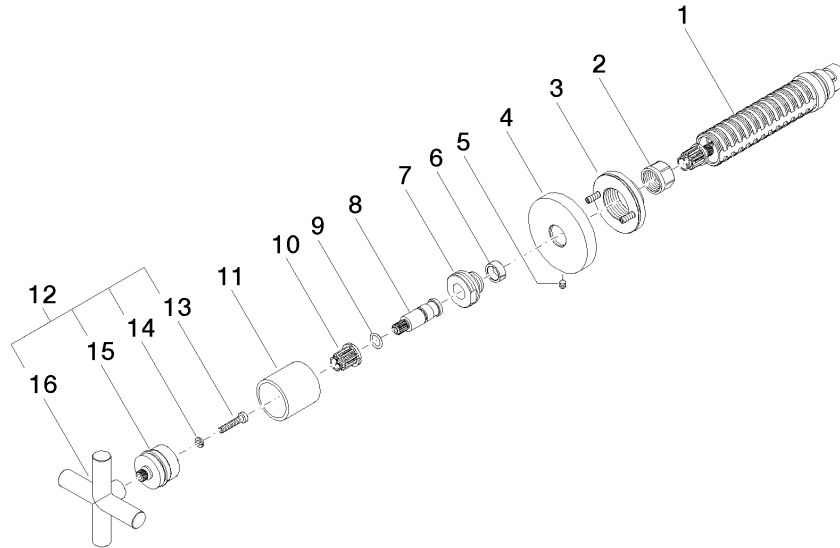
Required miscellaneous

|   |                           |               |
|---|---------------------------|---------------|
| <b>Wall valve 1/2" -</b>  |                           | 35 607 970 90 |
|  | •min. recess depth 85 mm  |               |
|   | •max. recess depth 145 mm |               |



| Codes & Standards |          |                        |                             |
|-------------------|----------|------------------------|-----------------------------|
| ASME A112.18.1    | cUPC     | DIN 4109               | EN 1111                     |
| EN 200            | ISO 3822 | Scottish Water Byelaws | UK Water Supply Regulations |
| Ü-Zeichen         |          |                        |                             |

| Certificates and sustainability |              |        |           |                 |
|---------------------------------|--------------|--------|-----------|-----------------|
| DVGW_DW-6501DN0                 | WRAS_2011    | LGA_29 | WRAS_2010 | DVGW_DW-6512DN0 |
| LGA_29                          | IAPMO_4976 ( |        |           |                 |



## Spare parts list

| No. | Item Number           | Name       | Quantity used | Delivery time |
|-----|-----------------------|------------|---------------|---------------|
|     | 11 09 21 02 144-00    | sleeve     | 1.00          | 10            |
|     | 1 90 90 03 143 00 90  | top        | 1.00          | 2             |
|     | 10 90 12 12 002 00 90 | fixing cap | 1.00          | 2             |
|     | 16 09 20 89 010-00    | handle     | 1.00          | 60            |
|     | 8 09 29 06 022 90     | spindle    | 1.00          | 2             |
|     | 7 09 24 05 002 90     | nipple     | 1.00          | 2             |
|     | 3 90 21 02 108 00 90  | disc       | 1.00          | 2             |
|     | 15 90 12 12 007 00-00 | base       | 1.00          | 10            |
|     | 4 09 27 89 108-00     | rosette    | 1.00          | 10            |
|     | 5 90 31 11 007 00 90  | pin        | 1.00          | 2             |
|     | 12 90 20 89 010 10-00 | handle     | 1.00          | 10            |
|     | 6 90 14 15 020 03 90  | ring       | 1.00          | 2             |
|     | 14 90 30 11 029 00 90 | disc       | 1.00          | 2             |
|     | 9 90 14 10 060 00 90  | seal       | 1.00          | 2             |
|     | 2 90 23 30 023 00 90  | nut        | 1.00          | 2             |
|     | 13 90 30 30 075 00 90 | screw      | 1.00          | 2             |