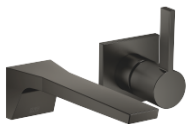


CL.1 Wall-mounted single-lever basin mixer without pop-up waste - Brushed Dark Platinum

CL.1

36 860 705 Product version from 7/1/2023



- 198mm projection
- fixed spout
- rectangular spray pattern with 40 individual jets
- hole diameter spout 37 mm
- hole diameter single-lever mixer 57 mm
- rosette 80 x 80 mm
- max. flow 4.5 l/min
- lead-free
- This product can help a building meet the requirements of Green Building Rating Systems, e.g. LEED®, BREEAM®, DGNB

	Brushed Dark Platinum	36 860 705-99
	Chrome	36 860 705-00
	Brushed Platinum	36 860 705-06
	Dark Chrome	36 860 705-19
	Brushed Champagne (22kt Gold)	36 860 705-46
	Champagne (22kt Gold)	36 860 705-47

Required miscellaneous



- Concealed wall-mounted single-lever mixer mixer on right -** 35 816 970 90
- NOTE: Not suitable for concealed installation. Connection by means of angle valves, mounted with screws to back wall.

Required miscellaneous



- Concealed wall-mounted single-lever mixer -** 35 860 970 90
- min. recess depth mm
 - max. recess depth mm
 - mixer can be placed above, to the left or to the right of the spout.

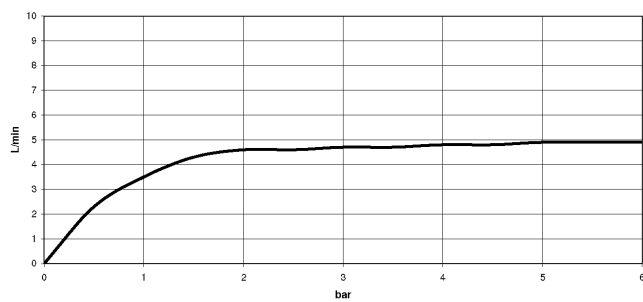
CL.1 Wall-mounted single-lever basin mixer without pop-up waste - Brushed Dark Platinum

CL.1

36 860 705 Product version from 7/1/2023
mm [inches]



Flow rate chart



Codes & Standards

DIN 4109

EN 817

ISO 3822

NSF372

NSF61

Ü-Zeichen



CL.1 Wall-mounted single-lever basin mixer without pop-up waste - Brushed
Dark Platinum

CL.1

36 860 705 Product version from 7/1/2023

Certificates

IAPMO_N-4976	DVGW_DW- 6512DN0	IAPMO_6397	LGA_29
--------------	---------------------	------------	--------

CL.1 Wall-mounted single-lever basin mixer without pop-up waste - Brushed Dark Platinum

CL.1

36 860 705 Product version from 7/1/2023



Spare parts list

No.	Item Number	Name	Quantity used	Delivery time
1	13 800 705-99	CL.1 Wall-mounted basin spout without pop-up waste - Brushed Dark Platinum	1	30
2	09 20 70 050-99	handle	1	30
3	90 31 11 030 00 90	pin	1	2
4	90 31 20 087 00-99	plug	1	30
5	09 11 02 288-99	cover	1	30
6	09 27 78 039-99	rosette	1	30
7	90 14 10 049 00 90	seal	1	2
8	90 15 05 064 01 90	cartridge	1	2
9	90 30 09 064 00 90	key	1	2