





IMO Tissue holder without cover - Brushed Chrome

83 500 670    Product version from 4/1/2024



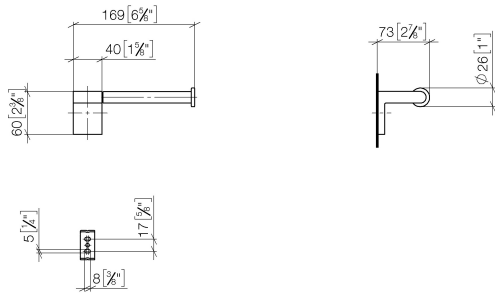
- width 166mm
- height 60 mm
- 73mm projection

	Brushed Chrome	83 500 670-93
	Brushed Platinum	83 500 670-06
	Dark Chrome	83 500 670-19
	Matte Black	83 500 670-33

# IMO Tissue holder without cover - Brushed Chrome

83 500 670 Product version from 4/1/2024

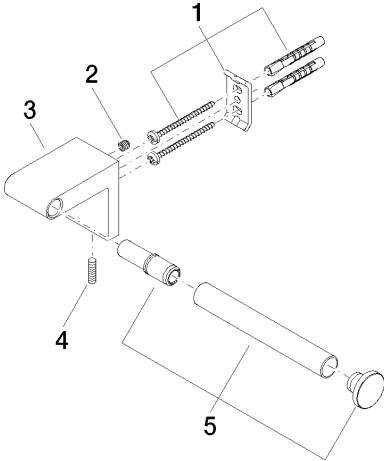
mm [inches]



# IMO Tissue holder without cover - Brushed Chrome

83 500 670    Product version from 4/1/2024

Parts for other  
finishes can be found  
here: Brushed  
Platinum



## Spare parts list

No.	Item Number	Name	Quantity used	Delivery time
1	05 17 20 736 00 90	fixing set	1	2
2	09 31 11 049 90	pin	1	2
3	08 17 67 502-93	holder	1	20
4	04 31 11 113 00 90	pin	1	2
5	90 28 22 650 00-93	holder	1	20