








CL.1 Bath spout without diverter for deck mounting - Brushed Champagne (22kt Gold)

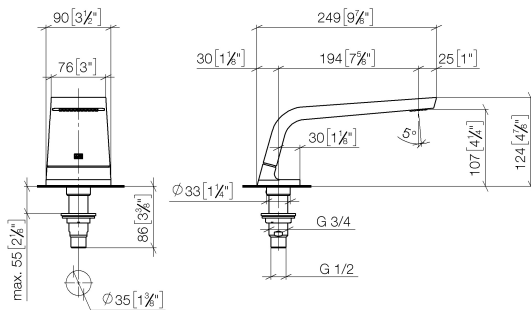
CL.1

| | | | |
|---|---|--|---------------|
| 13 612 705 Product version from 5/27/2021 | | | |
|  | <ul style="list-style-type: none"> • 200mm projection • rectangular spray pattern with 55 individual jets • height of mixer 125 mm • height up to aerator 108 mm • hole diameter 35 mm • 1/2" connection • max. flow 24.6 l/min at 3 bar flow pressure • WRAS | <div>  Brushed Champagne (22kt Gold) </div> | 13 612 705-46 |
| | | <div>  Chrome </div> | 13 612 705-00 |
| | | <div>  Brushed Platinum </div> | 13 612 705-06 |
| | | <div>  Dark Chrome </div> | 13 612 705-19 |
| | | <div>  Champagne (22kt Gold) </div> | 13 612 705-47 |
| | | <div>  Brushed Dark Platinum </div> | 13 612 705-99 |

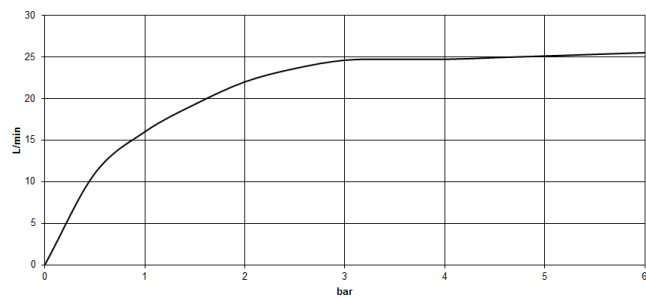
CL.1 Bath spout without diverter for deck mounting - Brushed Champagne (22kt Gold)

CL.1

13 612 705 Product version from 5/27/2021
mm [inches]



Flow rate chart



Codes & Standards

ASME A112.18.1 cUPC DIN 4109 ISO 3822

Ü-Zeichen



CL.1 Bath spout without diverter for deck mounting - Brushed Champagne (22kt Gold)

CL.1

13 612 705 Product version from 5/27/2021

Certificates and sustainability

LGA_28

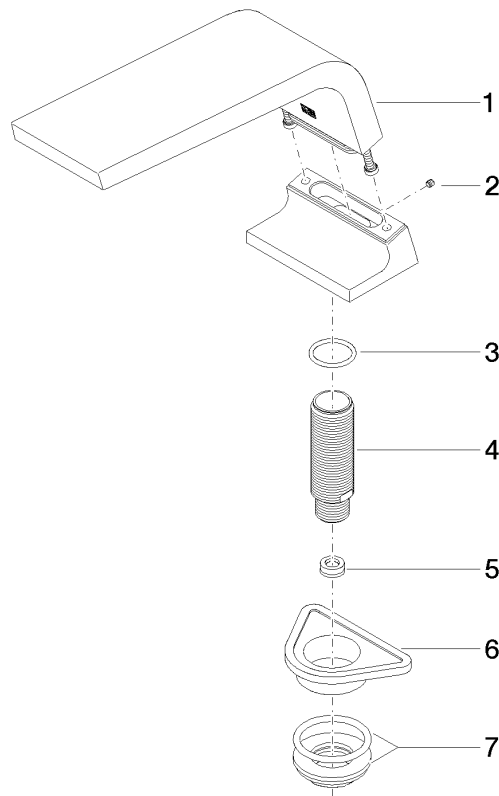
IAPMO_4976

CL.1 Bath spout without diverter for deck mounting - Brushed Champagne (22kt Gold)

CL.1

13 612 705 Product version from 5/27/2021

Parts for other
finishes can be found
here: [Chrome](#)



Spare parts list

| No. | Item Number | Name | Quantity used | Delivery time |
|-----|--------------------|--------------|---------------|---------------|
| 1 | 90 11 70 007 00-46 | spout | 1.00 | 30 |
| 3 | 09 14 10 009 90 | seal | 1.00 | 2 |
| 4 | 09 30 01 117 90 | connection | 1.00 | 2 |
| 5 | 09 23 01 057 90 | flow reducer | 1.00 | 2 |
| 6 | 09 18 40 090 90 | sleeve | 1.00 | 2 |
| 7 | 04 23 10 004 03 90 | fixing set | 1.00 | 2 |
| 2 | 09 31 11 099 90 | pin | 1.00 | 2 |