

MADISON Single-hole basin mixer with pop-up waste - Brushed Durabrass (23kt Gold)



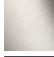




MADISON

22 500 360 Product version from 7/31/2009 to 9/7/2021



- 130mm projection
- fixed spout
- circular, air-enriched flow
- height of mixer 100 mm
- height up to aerator 65 mm
- hole diameter 35 mm
- 2x screw-in M 10 x 1 pressure hose, leak-tested
- max. flow 7 l/min
- lead-free
- This product can help a building meet the requirements of Green Building Rating Systems, e.g. LEED®, BREEAM®, DGNB
- WRAS

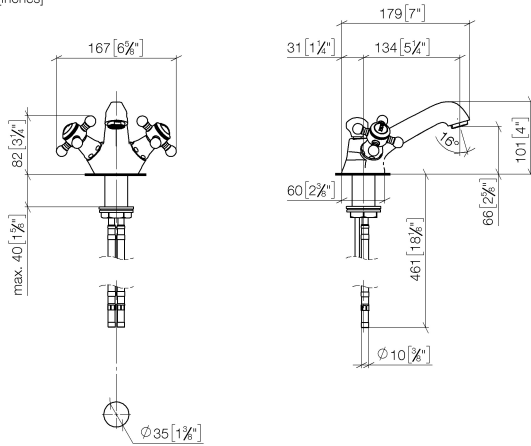
Only suitable for basins with an overflow.

	Brushed Durabrass (23kt Gold)	22 500 360-28
	Chrome	22 500 360-00
	Brushed Platinum	22 500 360-06
	Platinum	22 500 360-08
	Durabrass (23kt Gold)	22 500 360-09
	Brushed Dark Brass	22 500 360-39
	Brushed Dark Platinum	22 500 360-99

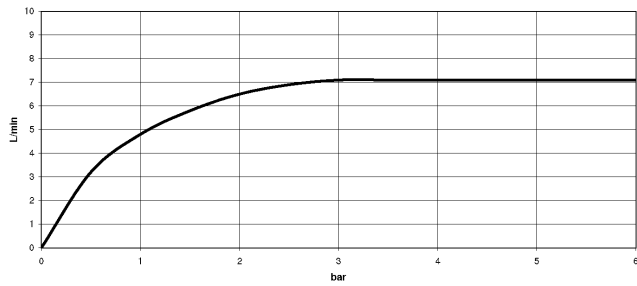
MADISON Single-hole basin mixer with pop-up waste - Brushed Durabrass (23kt Gold)

MADISON

22 500 360 Product version from 7/31/2009 to 9/7/2021
mm [inches]



Flow rate chart



Codes & Standards

DIN 4109

EN 200

ISO 3822

Scottish Water
Byelaws

UK Water Supply
Regulations

Ü-Zeichen

VA-Zeichen



MADISON Single-hole basin mixer with pop-up waste - Brushed Durabrass
(23kt Gold)

MADISON

22 500 360 Product version from 7/31/2009 to 9/7/2021

Certificates and sustainability

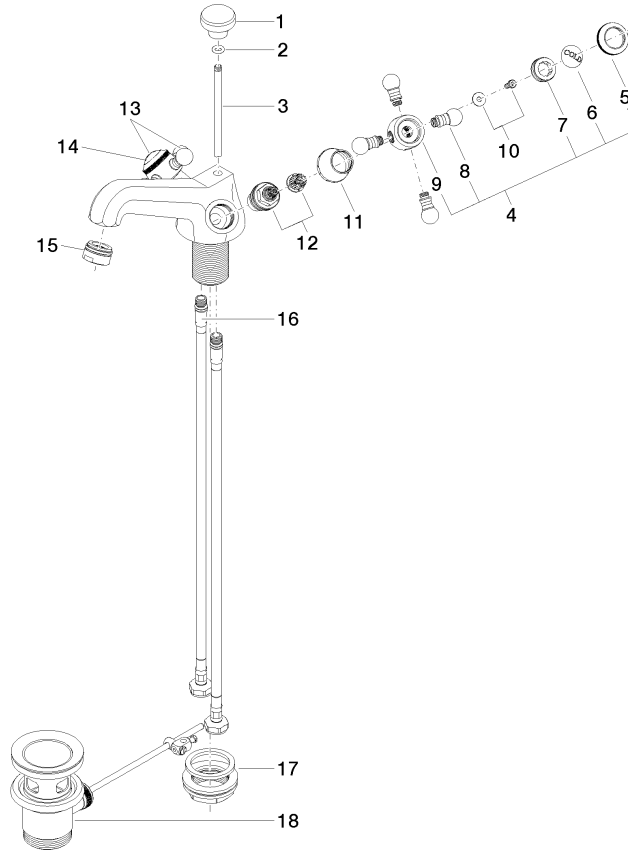
WRAS_2107	LGA_8	ETA_17
-----------	-------	--------

MADISON Single-hole basin mixer with pop-up waste - Brushed Durabrass (23kt Gold)

MADISON

22 500 360 Product version from 7/31/2009 to 9/7/2021

Parts for other
finishes can be found
here: [Chrome](#)



Spare parts list

No.	Item Number	Name	Quantity used	Delivery time
	6 09 26 01 010 90	accessories	1.00	2
	12 90 90 03 151 00 90	top	2.00	2
	13 04 20 36 002 07-28	handle (hot)	1.00	20
	10 04 30 30 029 00 90	fixing set	2.00	2
	3 09 31 09 004-28	pull-rod	1.00	20
	14 09 26 01 011 90	accessories	1.00	2
	1 09 20 36 030-28	handle	1.00	20
	7 09 20 83 006 90	handle	2.00	2
	8 09 20 36 004-28	handle	8.00	20
	4 04 20 36 002 06-28	handle (cold)	1.00	20
	16 04 30 04 104 00 90	hose	2.00	2
	9 09 20 36 002-28	handle	2.00	20
	11 09 21 02 055-28	cover	2.00	20
	17 04 23 10 009 01 90	fixing set	1.00	2
	5 09 20 36 005-28	handle	2.00	20
	15 90 23 01 118 01-28	aerator	1.00	20
	2 90 14 10 062 00 90	seal	1.00	2
	18 90 11 01 001 00-28	pop-up waste	1.00	20