

# Angle valve - Brushed Champagne (22kt Gold)

SERIES SPECIFIC

22 901 979    Product version from 5/27/2021

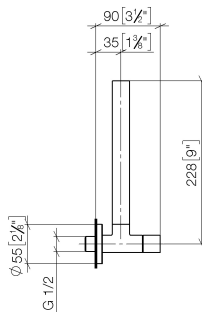


- rosette Ø 55 mm
- hose covering 200mm, for shortening
- WRAS

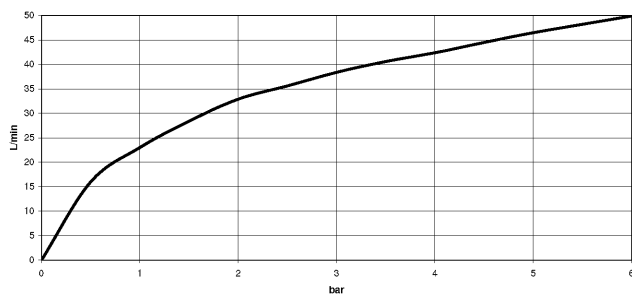
|   |                               |               |
|---|-------------------------------|---------------|
|    | Brushed Champagne (22kt Gold) | 22 901 979-46 |
|    | Chrome                        | 22 901 979-00 |
|    | Brushed Platinum              | 22 901 979-06 |
|    | Platinum                      | 22 901 979-08 |
|    | Durabrand (23kt Gold)         | 22 901 979-09 |
|    | Dark Chrome                   | 22 901 979-19 |
|    | Brushed Durabrand (23kt Gold) | 22 901 979-28 |
|    | Matte Black                   | 22 901 979-33 |
|    | Brushed Dark Brass            | 22 901 979-39 |
|   | Champagne (22kt Gold)         | 22 901 979-47 |
|  | Brushed Chrome                | 22 901 979-93 |
|  | Brushed Dark Platinum         | 22 901 979-99 |

22 901 979 Product version from 5/27/2021

mm [inches]



### Flow rate chart



### Codes & Standards

Scottish Water  
Byelaws

UK Water Supply  
Regulations



## Angle valve - Brushed Champagne (22kt Gold)

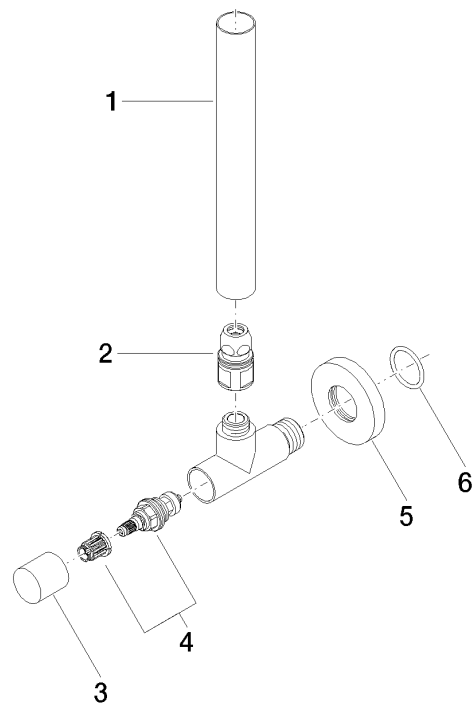
SERIES SPECIFIC

22 901 979 Product version from 5/27/2021

Certificates and sustainability

WRAS\_2205

Parts for other  
finishes can be found  
here: [Chrome](#)



Spare parts list

| No. | Item Number        | Name           | Quantity used | Delivery time |
|-----|--------------------|----------------|---------------|---------------|
| 3   | 09 20 22 001-46    | handle         | 1.00          | 30            |
| 6   | 09 14 10 093 90    | seal           | 1.00          | 2             |
| 2   | 90 24 03 276 00 90 | conversion kit | 1.00          | 2             |
| 4   | 90 90 03 006 00 90 | top            | 1.00          | 2             |
| 5   | 09 27 22 015-46    | rosette        | 1.00          | 30            |
| 1   | 09 28 22 020-46    | pipe           | 1.00          | 30            |