

## Hand shower set with cover plate - Brushed Dark Platinum

## SERIES SPECIFIC

27 818 980 Product version up to 7/19/2018



- COMPACT RAIN, max. flow rate 15 l/min (at 3 bar)
- metal shower hose 1250mm with integrated anti-twist protection
- 3/8" shower outlet
- with anti-scale system


### Technical data:

- cover plate 240 x 60 mm
- 1/2" wall elbow

### Notes:

- WRAS

Intrinsic protection against back flow.

	Brushed Dark Platinum	27 818 980-99
	Chrome	27 818 980-00
	Chrome	27 818 980-00 0010
	Brushed Platinum	27 818 980-06
	Brushed Platinum	27 818 980-06 0010
	Platinum	27 818 980-08
	Platinum	27 818 980-08 0010
	Dark Chrome	27 818 980-19
	Dark Chrome	27 818 980-19 0010
	Brushed Light Gold	27 818 980-27
	Brushed Durabrass (23kt Gold)	27 818 980-28
	Brushed Durabrass (23kt Gold)	27 818 980-28 0010
	Matte Black	27 818 980-33
	Matte Black	27 818 980-33 0010
	Brushed Champagne (22kt Gold)	27 818 980-46
	Brushed Champagne (22kt Gold)	27 818 980-46 0010
	Champagne (22kt Gold)	27 818 980-47 0010
	Champagne (22kt Gold)	27 818 980-47
	Brushed Chrome	27 818 980-93
	Brushed Chrome	27 818 980-93 0010
	Brushed Dark Platinum	27 818 980-99 0010

## Hand shower set with cover plate - Brushed Dark Platinum

SERIES SPECIFIC

27 818 980 Product version up to 7/19/2018

### Recommended miscellaneous



**Concealed wall elbow -**

- min. recess depth 90 mm
- max. recess depth 163 mm

35 085 970 90

27 818 980 Product version up to 7/19/2018

mm [inches]



### Flow rate chart



### Codes & Standards

DIN 4109

EN 1717

ISO 3822

Scottish Water  
Byelaws

UK Water Supply  
Regulations

Ü-Zeichen



## Hand shower set with cover plate - Brushed Dark Platinum

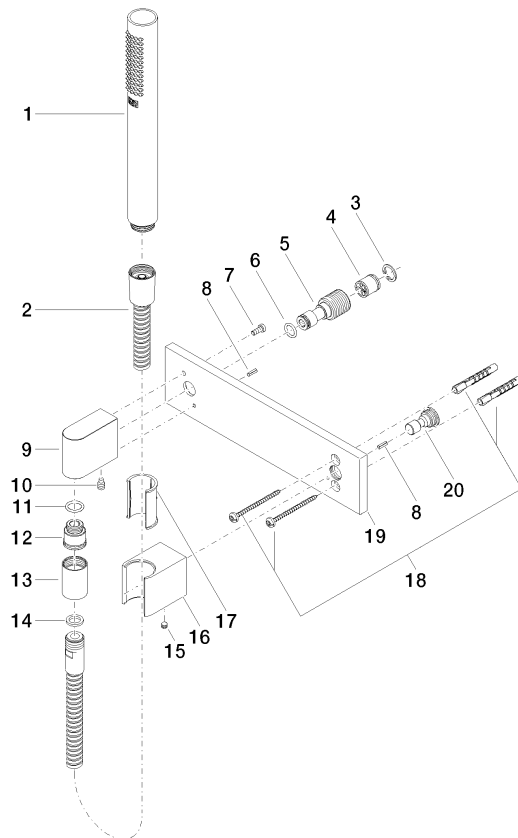
SERIES SPECIFIC

27 818 980 Product version up to 7/19/2018

### Certificates and sustainability

LGA\_29

Belgaqua\_22\_280\_2 WRAS\_2209



## Spare parts list

No.	Item Number	Name	Quantity used	Delivery time
2	90 30 02 072 00-99	Metal shower hose 1/2" x 3/8" x 1250 mm - Brushed Dark Platinum	1.00	20
16	09 17 20 044-99	holder	1.00	20
18	05 30 31 025 00 90	fixing set	1.00	2
12	09 24 03 107 20 90	nipple	1.00	2
5	09 24 03 116 20 90	nipple	1.00	2
19	09 11 02 120-99	plate	1.00	20
3	09 16 01 014 90	ring	1.00	2
10	04 31 11 140 00 90	pin	1.00	2
17	09 18 40 078 90	sleeve	1.00	2
6	09 14 10 008 90	seal	1.00	2
20	09 24 03 073 90	nipple	1.00	2
7	09 30 30 054 90	screw	1.00	2
8	09 31 11 026 90	pin	2.00	2
9	09 11 03 046-99	connection	1.00	20
14	90 14 20 026 00 90	seal	1.00	2
15	90 31 11 112 00 90	pin	1.00	2
11	90 14 10 077 00 90	seal	1.00	2
13	90 21 02 069 00-99	cover	1.00	20
4	90 23 01 141 00 90	back-flow preventer	1.00	2
1	90 12 11 140 40-99	shower	1.00	20