

Body spray without volume control FlowReduce - Brushed Champagne (22kt Gold)

IMO

28 518 782 Product version from 3/10/2014



Fits: IMO, MEM, CL.1, CYO

- spray head Ø 55mm
- ball-joint pivotable through 25° (in any direction)
- rain flow
- anti-scale system
- rosette 60 x 60 mm
- 1/2" connection
- max. flow 5 l/min
- WRAS
- This product can help a building meet the requirements of Green Building Rating Systems, e.g. LEED®, BREEAM®, DGNB

| | | |
|---|-------------------------------|---------------|
|  | Brushed Champagne (22kt Gold) | 28 518 782-46 |
|  | Chrome | 28 518 782-00 |
|  | Brushed Platinum | 28 518 782-06 |
|  | Platinum | 28 518 782-08 |
|  | Dark Chrome | 28 518 782-19 |
|  | Brushed Light Gold | 28 518 782-27 |
|  | Brushed Durabrass (23kt Gold) | 28 518 782-28 |
|  | Matte Black | 28 518 782-33 |
|  | Champagne (22kt Gold) | 28 518 782-47 |
|  | Brushed Chrome | 28 518 782-93 |
|  | Brushed Dark Platinum | 28 518 782-99 |

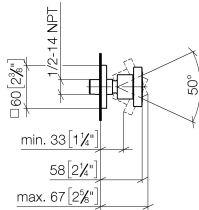
Recommended miscellaneous



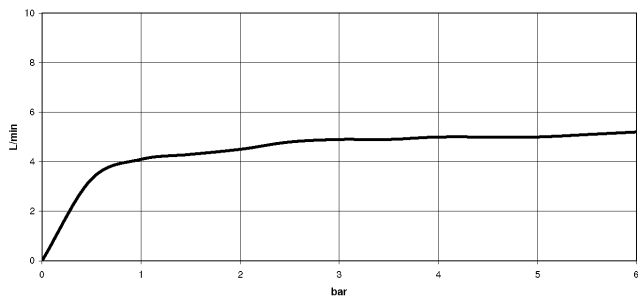
- Concealed wall elbow -**
- min. recess depth mm
 - max. recess depth mm

35 085 970 90

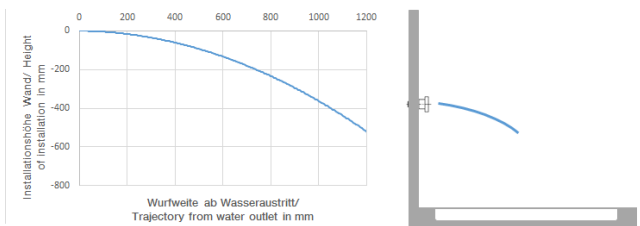
28 518 782 Product version from 3/10/2014
mm [inches]



Flow rate chart



Trajectory diagram



Codes & Standards

DIN 4109

ISO 3822

Scottish Water
Byelaws

UK Water Supply
Regulations

Ü-Zeichen



Body spray without volume control FlowReduce - Brushed Champagne (22kt Gold)

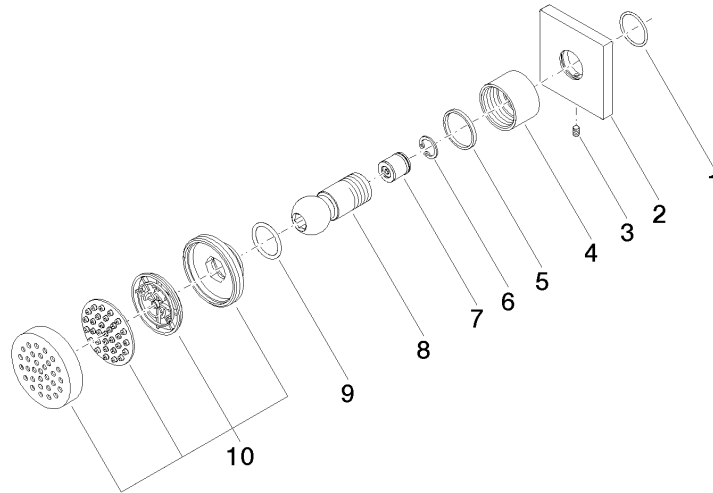
IMO

28 518 782 Product version from 3/10/2014

Certificates

LGA_38

WRAS_240602



Spare parts list

| No. | Item Number | Name | Quantity used | Delivery time |
|-----|--------------------|-----------------------|---------------|---------------|
| 1 | 09 14 10 098 90 | seal | 1 | 2 |
| 2 | 09 27 98 003-46 | rosette | 1 | 30 |
| 3 | 09 31 11 048 90 | pin | 1 | 2 |
| 4 | 09 23 30 026-46 | nut | 1 | 30 |
| 5 | 09 14 15 010 90 | ring | 1 | 2 |
| 6 | 09 16 01 014 90 | ring | 1 | 2 |
| 7 | 09 23 01 048 90 | back-flow preventer | 1 | 2 |
| 8 | 09 21 40 016-46 | connection | 1 | 30 |
| 9 | 09 14 10 015 90 | seal | 1 | 2 |
| 10 | 90 12 05 027 00-46 | casing (completely) | 1 | 30 |