

33 870 790



- 235mm projection
- pivotable spout 360°
- air-enriched flow and spray flow
- height of mixer 342 mm
- height up to aerator 292 mm
- hole diameter 35 mm
- fabric braided hose 1500 mm
- max. flow 8 l/min at 3 bar flow pressure
- lead-free
- This product can help a building meet the requirements of Green Building Rating Systems, e.g. LEED®, BREEAM®, DGNB

Intrinsic protection against back flow.

	Platinum	33 870 790-08
	Chrome	33 870 790-00
	Brushed Platinum	33 870 790-06
	Dark Chrome	33 870 790-19
	Brushed Durabrass (23kt Gold)	33 870 790-28
	Brushed Champagne (22kt Gold)	33 870 790-46
	Champagne (22kt Gold)	33 870 790-47
	Brushed Chrome	33 870 790-93
	Brushed Dark Platinum	33 870 790-99

Recommended miscellaneous

Strainer waste with control handle - Platinum 10 712 970-08

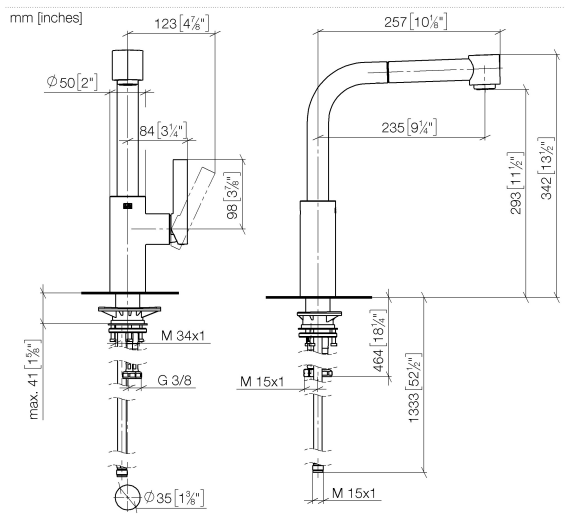


Recommended miscellaneous

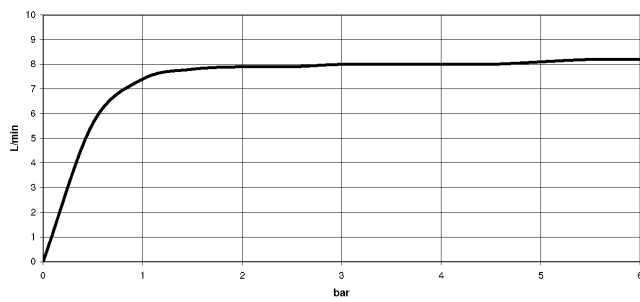
Dispenser without rosette - Platinum 82 424 970-08



33 870 790



Flow rate chart

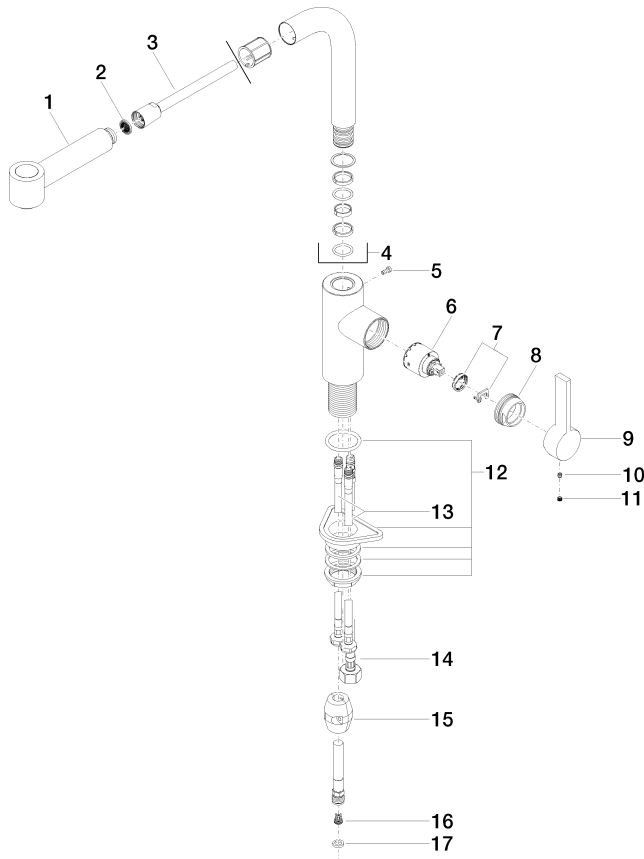


Certificates

LGA_18252. Belgaqua_21-379- GDV_0400277.
27_3.

33 870 790

Parts for other finishes can be found here: [Chrome](#)



Spare parts list

No.	Item Number	Name	Quantity used	Delivery time
1	90 12 11 098 00-08	shower	1	40
2	09 23 01 039 90	sieve	1	2
3	90 30 02 062 00-08	hose	1	40
4	90 28 22 186 00-08	spout	1	40
5	09 30 30 054 90	screw	1	2
6	90 15 05 061 00 90	cartridge	1	60
7	90 28 10 148 00 90	accessories	1	2
8	09 24 04 141-08	nut	1	40
9	09 20 79 040-08	handle	1	40
10	90 31 11 030 00 90	pin	1	2
11	90 31 20 109 00 90	plug	1	2
12	04 23 10 044 02 90	fixing set	1	2
13	04 30 04 104 00 90	hose	2	2
14	04 30 04 029 00 90	hose	1	2
15	04 21 50 005 00 90	accessories	1	2
16	09 23 01 131 90	back-flow preventer	1	2
17	90 14 20 019 00 90	seal	1	2