

## WATER POINTS Concealed body spray - Brushed Champagne (22kt Gold)

36 525 979 Product version from 10/1/2023



- HORIZONTAL RAIN, max. flow rate 9 l/min (at 3 bar)
- with anti-scale system
- cover plate 120 x 120 mm

|  |                               |               |
|--|-------------------------------|---------------|
|  | Brushed Champagne (22kt Gold) | 36 525 979-46 |
|  | Chrome                        | 36 525 979-00 |
|  | Brushed Platinum              | 36 525 979-06 |
|  | Platinum                      | 36 525 979-08 |
|  | Dark Chrome                   | 36 525 979-19 |
|  | Light Gold                    | 36 525 979-26 |
|  | Brushed Light Gold            | 36 525 979-27 |
|  | Brushed Durabrass (23kt Gold) | 36 525 979-28 |
|  | Matte Black                   | 36 525 979-33 |
|  | Brushed Bronze                | 36 525 979-42 |
|  | Champagne (22kt Gold)         | 36 525 979-47 |
|  | Brushed Chrome                | 36 525 979-93 |
|  | Brushed Dark Platinum         | 36 525 979-99 |

### Required miscellaneous



**WATER POINTS Adapter plate -** 12 305 970 90

### Required miscellaneous



**Concealed wall installation box -** 35 205 970 90

- min. recess depth mm
- max. recess depth mm

### Recommended miscellaneous



**xGRID Attachment set for integrating in the dry wall construction -** 12 340 970 90

### Required miscellaneous



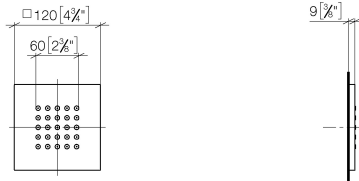
**xGRID Installation track 555 mm -** 12 360 970 90

## WATER POINTS Concealed body spray - Brushed Champagne (22kt Gold)

---

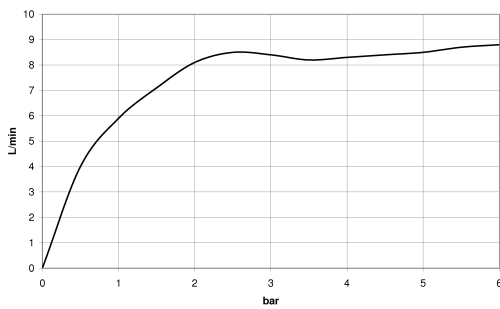
36 525 979 Product version from 10/1/2023

mm [inches]



### Flow rate chart

---



### Codes & Standards

---

DIN 4109

ISO 3822

Ü-Zeichen



## WATER POINTS Concealed body spray - Brushed Champagne (22kt Gold)

---

36 525 979 Product version from 10/1/2023

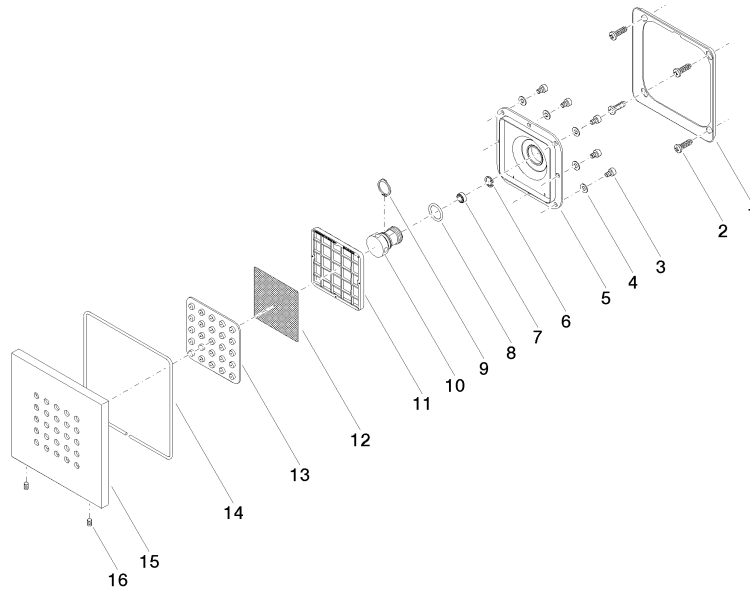
### Certificates

---

LGA\_38

**WATER POINTS Concealed body spray - Brushed Champagne (22kt Gold)**

36 525 979 Product version from 10/1/2023



**Spare parts list**

| No. | Item Number     | Name         | Quantity used | Delivery time |
|-----|-----------------|--------------|---------------|---------------|
| 1   | 09 28 01 024 90 | holder       | 1             | 2             |
| 2   | 09 30 31 022 90 | screw        | 4             | 2             |
| 3   | 09 30 30 031 90 | screw        | 8             | 2             |
| 4   | 09 30 11 024 90 | disc         | 8             | 2             |
| 5   | 09 12 12 205 90 | base         | 1             | 2             |
| 6   | 09 16 01 016 90 | ring         | 1             | 2             |
| 7   | 09 23 01 136 90 | flow reducer | 1             | 2             |
| 8   | 09 14 10 130 90 | seal         | 1             | 2             |
| 9   | 09 16 01 017 90 | ring         | 1             | 2             |
| 10  | 09 17 11 146 90 | distributor  | 1             | 60            |
| 11  | 09 17 97 057 90 | holder       | 1             | 2             |
| 12  | 09 29 30 043 90 | insert       | 1             | 2             |
| 13  | 09 12 01 075 90 | insert       | 1             | 2             |
| 14  | 09 14 03 117 90 | seal         | 1             | 2             |
| 15  | 09 27 98 004-46 | rosette      | 1             | 30            |
| 16  | 09 31 11 048 90 | pin          | 2             | 2             |