

36 607 371

- WRAS 2011026, 2010066

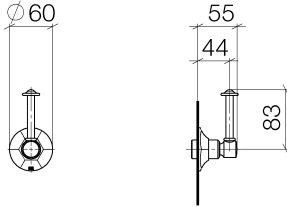




MADISON Wall valve clockwise closing 1/2" - Brushed Durabron (23kt Gold)

MADISON

36 607 371



Codes & Standards

DIN 4109

EN 1111

EN 200

ISO 3822

Scottish Water
Byelaws

UK Water Supply
Regulations

Ü-Zeichen

Certificates

DVGW_DW-
6501DN0

WRAS_2010

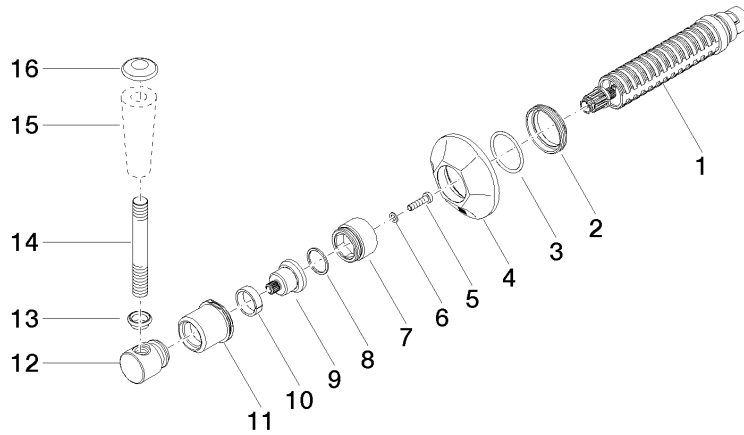
LGA_29

LGA_29

DVGW_DW-
6512DN0

WRAS_2011

36 607 371





MADISON Wall valve clockwise closing 1/2" - Brushed Durabronze (23kt Gold)

MADISON

36 607 371

Spare parts list