

TARA Wall-mounted basin mixer without pop-up waste - Champagne (22kt Gold)

TARA

36 712 892 Product version from 4/1/2024



- 190mm projection
- fixed spout
- circular, air-enriched flow
- hole diameter valve 40 mm
- hole diameter spout 40 mm
- rosette Ø 55 mm
- max. flow 7 l/min
- lead-free
- WRAS
- This product can help a building meet the requirements of Green Building Rating Systems, e.g. LEED®, BREEAM®, DGNB

| | | |
|--|--------------------------------|---------------|
| | Champagne (22kt Gold) | 36 712 892-47 |
| | Chrome | 36 712 892-00 |
| | Brushed Platinum | 36 712 892-06 |
| | Platinum | 36 712 892-08 |
| | Dark Chrome | 36 712 892-19 |
| | Brushed Durabronze (23kt Gold) | 36 712 892-28 |
| | Matte Black | 36 712 892-33 |
| | Brushed Dark Brass | 36 712 892-39 |
| | Brushed Bronze | 36 712 892-42 |
| | Brushed Champagne (22kt Gold) | 36 712 892-46 |
| | Brushed Chrome | 36 712 892-93 |
| | Brushed Dark Platinum | 36 712 892-99 |

Required miscellaneous



Concealed wall-mounted mixer centred spout - 35 700 970 90

- min. recess depth 85 mm
- max. recess depth 145 mm

Required miscellaneous



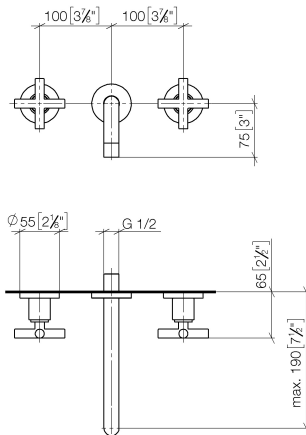
Concealed wall-mounted mixer variable positioning - 35 720 970 90

- min. recess depth 85 mm
- max. recess depth 145 mm

TARA Wall-mounted basin mixer without pop-up waste - Champagne (22kt Gold)

TARA

36 712 892 Product version from 4/1/2024
mm [inches]



Flow rate chart



Codes & Standards

DIN 4109

ISO 3822

Ü-Zeichen



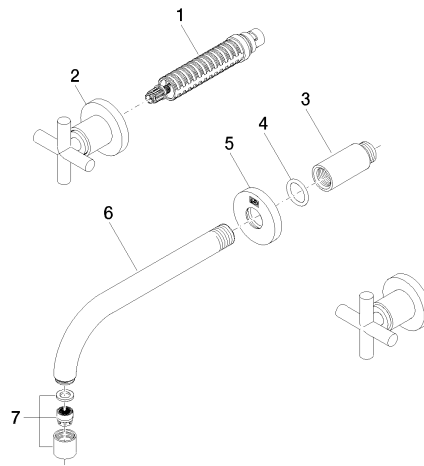
TARA Wall-mounted basin mixer without pop-up waste - Champagne (22kt Gold)

TARA

36 712 892 Product version from 4/1/2024

Certificates and sustainability

LGA_18



Spare parts list

| No. | Item Number | Name | Quantity used | Delivery time |
|------------------------------------------------------------------------|--------------------|-----------------------------------------|---------------|---------------|
| 5 | 09 27 22 503-47 | rosette | 1.00 | 30 |
| 2 | 36 310 892-47 | TARA Wall valve - Champagne (22kt Gold) | 2.00 | - |
| Spare part can no longer be ordered, please order the replacement item | | | | |
| 1 | 90 90 03 157 00 90 | top | 2.00 | 2 |
| 6 | 04 28 22 090 10-47 | spout | 1.00 | 30 |
| 3 | 09 24 03 081 10 90 | extension | 1.00 | 2 |
| 7 | 90 23 01 019 00-47 | aerator | 1.00 | 30 |
| 4 | 90 14 10 026 00 90 | seal | 1.00 | 2 |