

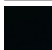




SERIES-VARIOUS AQUAHALO Rain panel - Chrome

41 750 979



- exposed trim parts
- Rain panel with 3 different flow modes
- AQUACIRCLE RAIN: Circular rain curtain, max. flow rate 14 l/min (at 3 bar)
- TEMPEST RAIN: Natural rain, max. flow rate 9 l/min (at 3 bar)
- DIAMOND RAIN: Ring of rain, max. flow rate 6.8 l/min (at 3 bar)
- Outer diameter: 605 mm, opening diameter: 465 mm
- Weight: 6 kg
- central LED Spot 3000 K
- Protection rating IP67
- Recommended control element: xTool
- Not suitable for use in a steam room.

| | | |
|---|-------------------------------|---------------|
|  | Chrome | 41 750 979-00 |
|  | Brushed Platinum | 41 750 979-06 |
|  | Matte Black | 41 750 979-33 |
|  | Brushed Champagne (22kt Gold) | 41 750 979-46 |
|  | Champagne (22kt Gold) | 41 750 979-47 |

Required miscellaneous

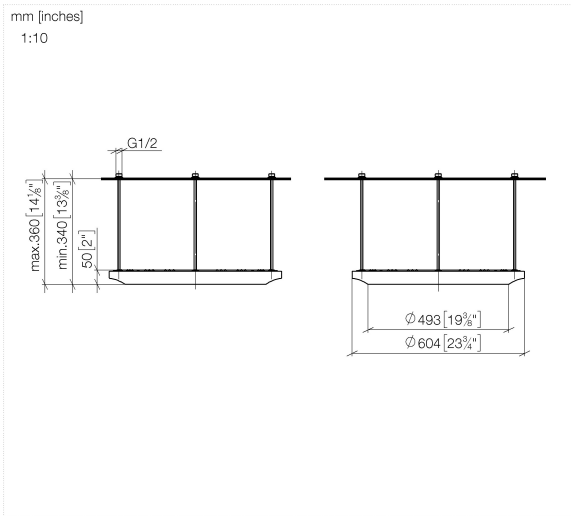


SERIES-VARIOUS AQUAHALO 35 750 970-00
Concealed ceiling installation box - Chrome

- concealed rough parts
- Ceiling installation enclosure 605 x 605 x 95 mm
- Weight: 10 kg
- min. recess depth 110 mm
- max. recess depth 150 mm

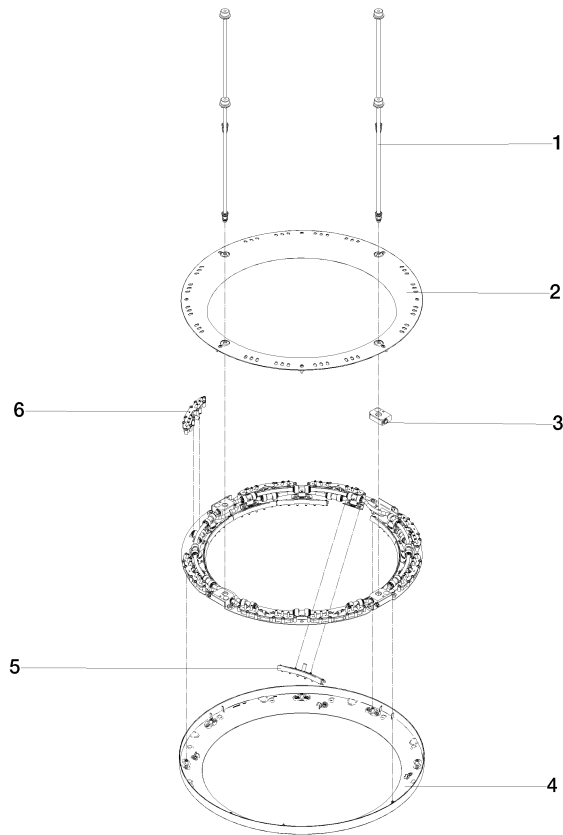
SERIES-VARIOUS AQUAHALO Rain panel - Chrome

41 750 979



SERIES-VARIOUS AQUAHALO Rain panel - Chrome

41 750 979



Spare parts list

| No. | Item Number | Name | Quantity used | Delivery time |
|-----|--------------------|--------------------|---------------|---------------|
| 1 | 90 28 22 605 01-00 | distributor | 1 | 10 |
| 2 | 90 12 05 087 00-00 | casing | 1 | 10 |
| 3 | 90 24 03 535 00 90 | distributor | 1 | 10 |
| 4 | 90 12 05 088 00-00 | casing | 1 | 10 |
| 5 | 90 17 09 060 01 90 | jet module | 1 | 2 |
| 6 | 90 17 09 061 01 90 | jet module TEMPEST | 8 | 2 |