

## WATER FALL Cascade spout for wall mounting - Brushed Chrome

IMO

13 420 979



- 120mm projection
- CASCADE, max. flow rate 26.5 l/min (at 3 bar)
- cover plate 240 x 60 mm
- 1/2" connection
- plug-link mounting
- WRAS 2111005

Fits: IMO, LULU, MADISON, MEM, TARA,  
CL.1, LISSÉ, VAIA, META, CYO

|  |                                     |               |
|--|-------------------------------------|---------------|
|    | Brushed Chrome                      | 13 420 979-93 |
|    | Chrome                              | 13 420 979-00 |
|    | Brushed Platinum                    | 13 420 979-06 |
|    | Platinum                            | 13 420 979-08 |
|    | Dark Chrome                         | 13 420 979-19 |
|    | Light Gold                          | 13 420 979-26 |
|    | Brushed Light Gold                  | 13 420 979-27 |
|    | Brushed Durabronze<br>(23kt Gold)   | 13 420 979-28 |
|    | Matte Black                         | 13 420 979-33 |
|   | Brushed Bronze                      | 13 420 979-42 |
|  | Brushed<br>Champagne (22kt<br>Gold) | 13 420 979-46 |
|  | Champagne (22kt<br>Gold)            | 13 420 979-47 |

13 420 979

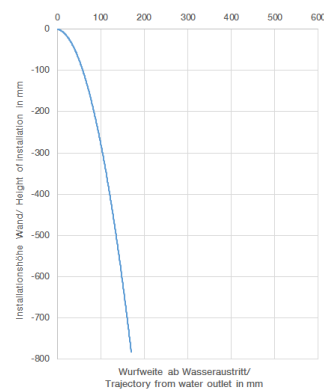
mm [inches]



**Flow rate chart**



**Trajectory diagram**



## Codes & Standards

ASME A112.18.1

cUPC

DIN 4109

ISO 3822

## Ü-Zeichen



## WATER FALL Cascade spout for wall mounting - Brushed Chrome

---

IMO

13 420 979

### Certificates

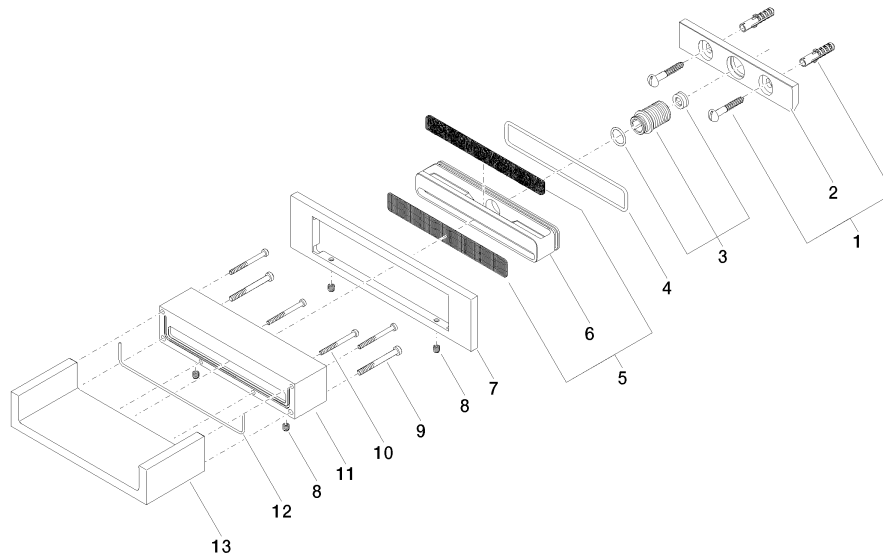
---

IAPMO\_4976

LGA\_18

**Product version from 4/1/2023**

Parts for other  
finishes can be found  
here: [Chrome](#)





## WATER FALL Cascade spout for wall mounting - Brushed Chrome

IMO

13 420 979

### Spare parts list

#### Product version from 4/1/2023

| No. | Item Number        | Name       | Quantity used | Delivery time |
|-----|--------------------|------------|---------------|---------------|
|     | 04 30 31 024 01 90 | fixing set | 20            | 2             |