

## TARA Single-hole mixer - Chrome

TARA

22 815 892



- 235mm projection
- pivotable spout 360°
- air-enriched flow
- height of mixer 378 mm
- height up to aerator 220 mm
- hole diameter 35 mm
- max. flow 7 l/min at 3 bar flow pressure
- lead-free
- This product can help a building meet the requirements of Green Building Rating Systems, e.g. LEED®, BREEAM®, DGNB
- WRAS 1810003

|  |                                |               |
|--|--------------------------------|---------------|
|  | Chrome                         | 22 815 892-00 |
|  | Brushed Platinum               | 22 815 892-06 |
|  | Platinum                       | 22 815 892-08 |
|  | Durabronze (23kt Gold)         | 22 815 892-09 |
|  | Dark Chrome                    | 22 815 892-19 |
|  | Brushed Durabronze (23kt Gold) | 22 815 892-28 |
|  | Matte Black                    | 22 815 892-33 |
|  | Brushed Champagne (22kt Gold)  | 22 815 892-46 |
|  | Champagne (22kt Gold)          | 22 815 892-47 |
|  | Brushed Chrome                 | 22 815 892-93 |
|  | Brushed Dark Platinum          | 22 815 892-99 |

### Recommended miscellaneous

**Strainer waste with control handle - Chrome** 10 710 970-00



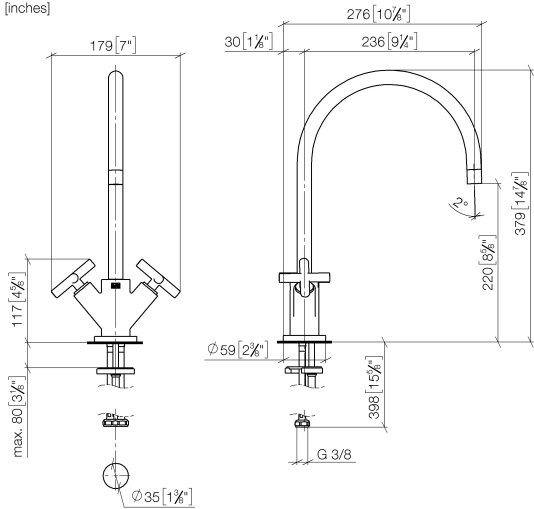
### Recommended miscellaneous

**Dispenser with rosette - Chrome** 82 444 970-00

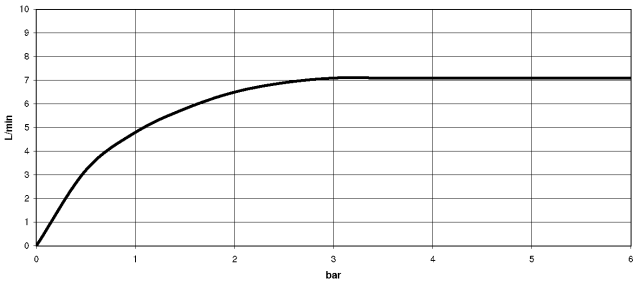


22 815 892

mm [inches]



**Flow rate chart**



**Codes & Standards**

DIN 4109

EN 200

Executive Order  
no. 1007

ISO 3822

Scottish Water  
Byelaws

UK Water Supply  
Regulations

Ü-Zeichen

VA-Zeichen



TARA Single-hole mixer - Chrome

TARA

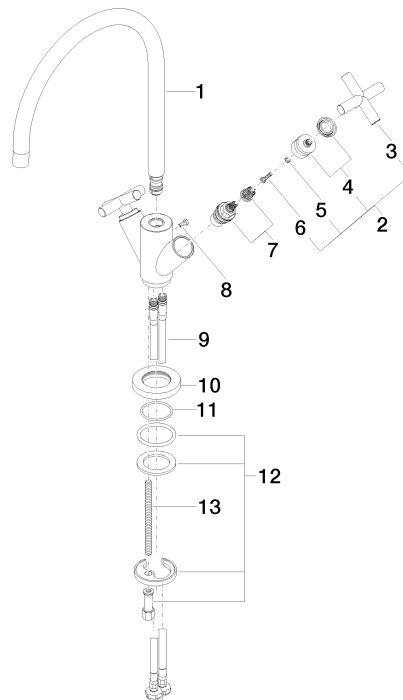
22 815 892

Certificates

|          |        |        |           |
|----------|--------|--------|-----------|
| GDV_0400 | LGA_19 | ETA_18 | WRAS_1810 |
|----------|--------|--------|-----------|

Product version from 6/30/2009 to 5/27/2021

**Product version from 5/27/2021**





## TARA Single-hole mixer - Chrome

TARA

22 815 892

### Spare parts list

Product version from 6/30/2009 to 5/27/2021

#### Product version from 5/27/2021

| No. | Item Number        | Name  | Quantity used | Delivery time |
|-----|--------------------|-------|---------------|---------------|
|     | 90 28 22 226 01-00 | spout | 20            | 10            |