

## TARA Single-hole mixer - Dark Chrome

TARA

22 815 892



- 235mm projection
- pivotable spout 360°
- air-enriched flow
- height of mixer 378 mm
- height up to aerator 220 mm
- hole diameter 35 mm
- max. flow 7 l/min at 3 bar flow pressure
- lead-free
- This product can help a building meet the requirements of Green Building Rating Systems, e.g. LEED®, BREEAM®, DGNB
- WRAS 1810003

	Dark Chrome	22 815 892-19
	Chrome	22 815 892-00
	Brushed Platinum	22 815 892-06
	Platinum	22 815 892-08
	Durabronze (23kt Gold)	22 815 892-09
	Brushed Durabronze (23kt Gold)	22 815 892-28
	Matte Black	22 815 892-33
	Brushed Champagne (22kt Gold)	22 815 892-46
	Champagne (22kt Gold)	22 815 892-47
	Brushed Chrome	22 815 892-93
	Brushed Dark Platinum	22 815 892-99

### Recommended miscellaneous

**Dispenser with rosette - Dark Chrome**

82 444 970-19



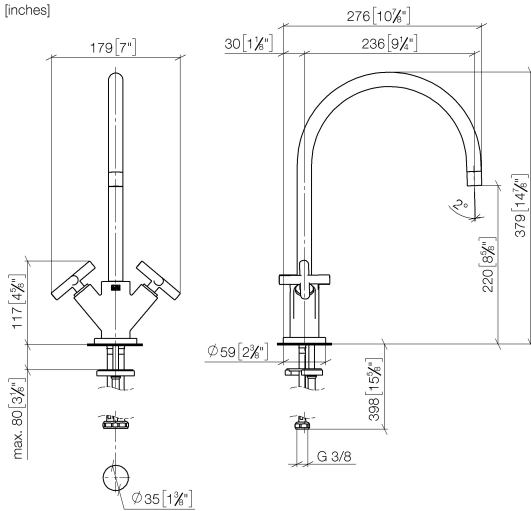
### Recommended miscellaneous

**Strainer waste with control handle - Dark Chrome** 10 710 970-19

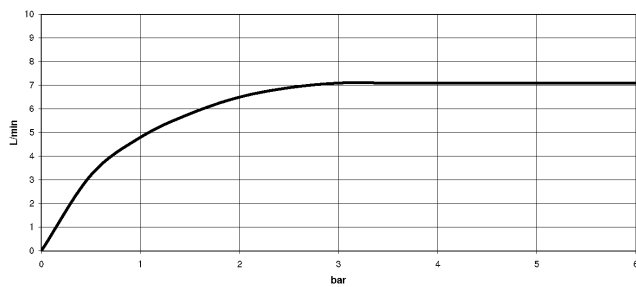


22 815 892

mm [inches]



### Flow rate chart



### Codes & Standards

Executive Order  
no. 1007



## TARA Single-hole mixer - Dark Chrome

---

TARA

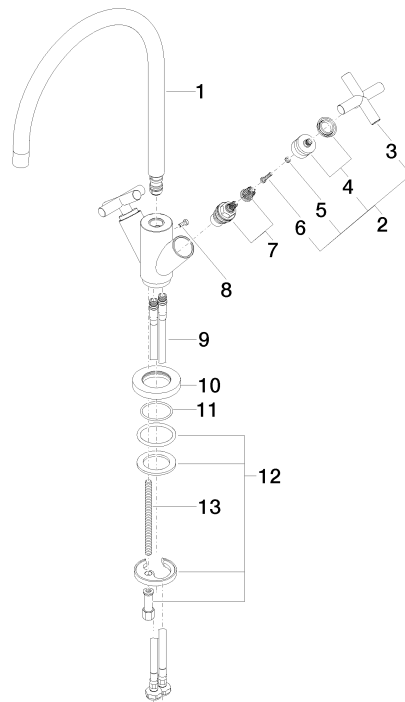
22 815 892

### Certificates

---

GDV\_0400

Parts for other  
finishes can be found  
here: [Chrome](#)





## TARA Single-hole mixer - Dark Chrome

TARA

22 815 892

### Spare parts list