

TARA Two-hole bath mixer for free-standing assembly with hand shower set - Brushed Chrome

TARA

25 943 892



- 220mm projection
- pivotable spout 180°
- Hand shower: COMPACT RAIN, max. flow rate 6.8 l/min (at 3 bar)
- spout: circular, air-enriched flow
- hand shower with anti-scale system
- rotary diverter for bath/shower
- total height 920 mm
- stand pipes height 628 mm
- height up to aerator 765 mm
- slide-on rosettes Ø 90 mm
- gauge 150 mm
- metal shower hose 1250mm with integrated anti-twist protection
- pivotable shower holder on the right foot
- max. flow 22 l/min at 3 bar flow pressure
- WRAS 2212005

Intrinsic protection against back flow.

| | | |
|--|--------------------------------|---------------|
|  | Brushed Chrome | 25 943 892-93 |
|  | Chrome | 25 943 892-00 |
|  | Brushed Platinum | 25 943 892-06 |
|  | Platinum | 25 943 892-08 |
|  | Dark Chrome | 25 943 892-19 |
|  | Brushed Durabronze (23kt Gold) | 25 943 892-28 |
|  | Matte Black | 25 943 892-33 |
|  | Brushed Bronze | 25 943 892-42 |
|  | Brushed Champagne (22kt Gold) | 25 943 892-46 |
|  | Champagne (22kt Gold) | 25 943 892-47 |
|  | Brushed Dark Platinum | 25 943 892-99 |

TARA Two-hole bath mixer for free-standing assembly with hand shower set - Brushed Chrome

TARA

25 943 892

mm [inches]



Flow rate chart



Codes & Standards

ASME A112.18.1

cUPC

DIN 4109

EN 1717

ISO 3822

Scottish Water
Byelaws

UK Water Supply
Regulations

Ü-Zeichen



TARA Two-hole bath mixer for free-standing assembly with hand shower set -
Brushed Chrome

TARA

25 943 892

Certificates

IAPMO_4976

Belgaqua_21-033-2 LGA_18

WRAS_2212

TARA Two-hole bath mixer for free-standing assembly with hand shower set - Brushed Chrome

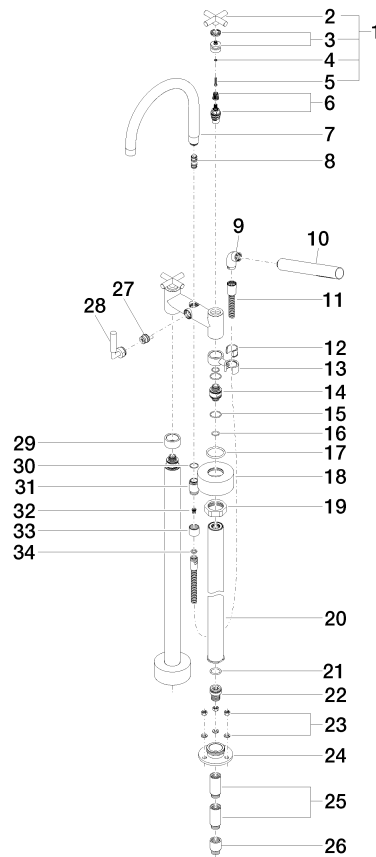
TARA

25 943 892

Product version up to 5/27/2021

Product version from 5/27/2021

Parts for other
finishes can be found
here: [Chrome](#)





TARA Two-hole bath mixer for free-standing assembly with hand shower set -
Brushed Chrome

TARA

25 943 892

Spare parts list

Product version up to 5/27/2021

Product version from 5/27/2021

| No. | Item Number | Name | Quantity used | Delivery time |
|-----|--------------------|--------|---------------|---------------|
| | 90 20 89 010 10-93 | handle | 63 | 20 |