

## Affusion pipe with cover plate FlowReduce - Chrome

IMO

27 858 979



Fits: IMO, MEM, CL.1, CYO

- laminar flow
- 3/8" shower outlet
- cover plate 240 x 60 mm
- metal shower hose 1250mm with integrated anti-twist protection
- 1/2" connection
- plug-link mounting
- max. flow 7 l/min
- This product can help a building meet the requirements of Green Building Rating Systems, e.g. LEED®, BREEAM®, DGNB

Intrinsic protection against back flow.

|  |                                |               |
|--|--------------------------------|---------------|
|    | Chrome                         | 27 858 979-00 |
|    | Brushed Platinum               | 27 858 979-06 |
|    | Platinum                       | 27 858 979-08 |
|    | Dark Chrome                    | 27 858 979-19 |
|    | Brushed Light Gold             | 27 858 979-27 |
|    | Brushed Durabronze (23kt Gold) | 27 858 979-28 |
|    | Matte Black                    | 27 858 979-33 |
|    | Brushed Champagne (22kt Gold)  | 27 858 979-46 |
|    | Champagne (22kt Gold)          | 27 858 979-47 |
|   | Brushed Chrome                 | 27 858 979-93 |
|  | Brushed Dark Platinum          | 27 858 979-99 |

## Affusion pipe with cover plate FlowReduce - Chrome

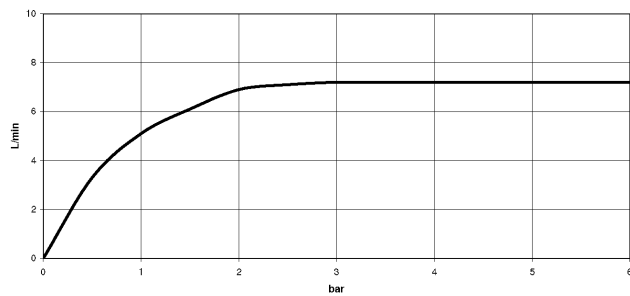
IMO

27 858 979

mm [inches]



### Flow rate chart



### Codes & Standards

DIN 4109

EN 1717

ISO 3822

Ü-Zeichen



## Affusion pipe with cover plate FlowReduce - Chrome

IMO

27 858 979

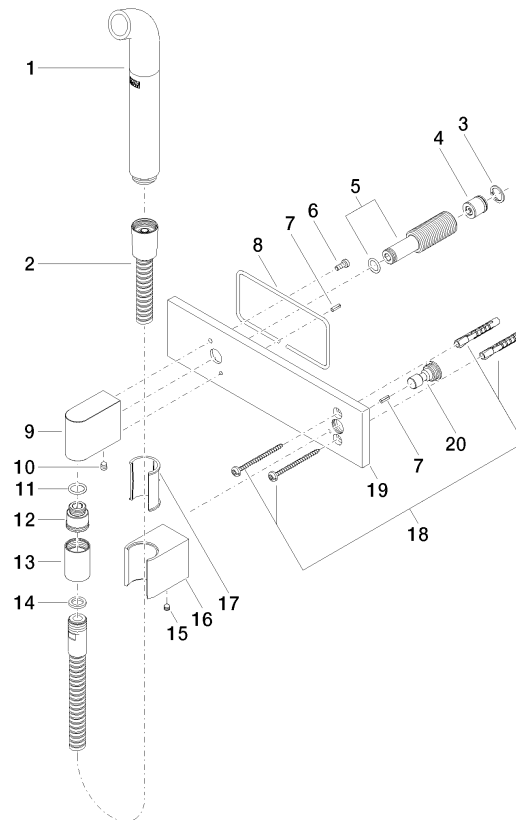
### Certificates

LGA\_38

Belgaqua\_24-007-2

**Product version from 4/1/2024**

Parts for other  
finishes can be found  
here: Brushed  
Platinum





Affusion pipe with cover plate FlowReduce - Chrome

IMO

27 858 979

Spare parts list

Product version from 4/1/2024

| No. | Item Number        | Name  | Quantity used | Delivery time |
|-----|--------------------|-------|---------------|---------------|
|     | 04 12 11 073 01-00 | spout | 21            | 10            |