

Shower head FlowReduce - Matte Black

IMO

28 508 980

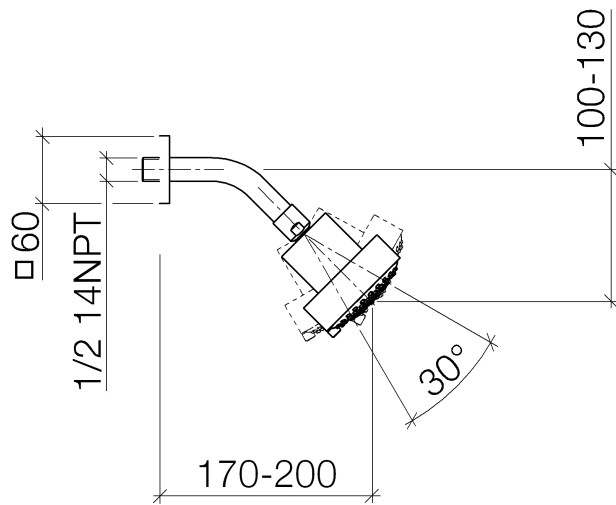


Fits: IMO, MEM, CL.1, CYO

- 200mm projection
- ball-joint pivotable through 30°
- Three settings: PURIFY RAIN, COMPACT SOFT FLOW, COMPACT AQUAPRESSURE FLOW, max. flow rate 6.8 l/min (at 3 bar)
- with anti-scale system
- spray head Ø 92mm
- rosette 60 x 60 mm
- 1/2" connection
- This product can help a building meet the requirements of Green Building Rating Systems, e.g. LEED®, BREEAM®, DGNB

| | | |
|--|--------------------------------|--------------------|
|  | Matte Black | 28 508 980-33 0010 |
|  | Chrome | 28 508 980-00 0010 |
|  | Chrome | 28 508 980-00 |
|  | Brushed Platinum | 28 508 980-06 0010 |
|  | Brushed Platinum | 28 508 980-06 |
|  | Platinum | 28 508 980-08 0010 |
|  | Platinum | 28 508 980-08 |
|  | Dark Chrome | 28 508 980-19 0010 |
|  | Dark Chrome | 28 508 980-19 |
|  | Brushed Light Gold | 28 508 980-27 0010 |
|  | Brushed Light Gold | 28 508 980-27 |
|  | Brushed Durabronze (23kt Gold) | 28 508 980-28 0010 |
|  | Brushed Durabronze (23kt Gold) | 28 508 980-28 |
|  | Matte Black | 28 508 980-33 |
|  | Brushed Champagne (22kt Gold) | 28 508 980-46 0010 |
|  | Brushed Champagne (22kt Gold) | 28 508 980-46 |
|  | Champagne (22kt Gold) | 28 508 980-47 0010 |
|  | Champagne (22kt Gold) | 28 508 980-47 |
|  | Brushed Chrome | 28 508 980-93 0010 |
|  | Brushed Chrome | 28 508 980-93 |
|  | Brushed Dark Platinum | 28 508 980-99 0010 |
|  | Brushed Dark Platinum | 28 508 980-99 |

28 508 980



Flow rate chart



Codes & Standards

ASME A112.18.1

cUPC

DIN 4109

ISO 3822

Ü-Zeichen



Shower head FlowReduce - Matte Black

IMO

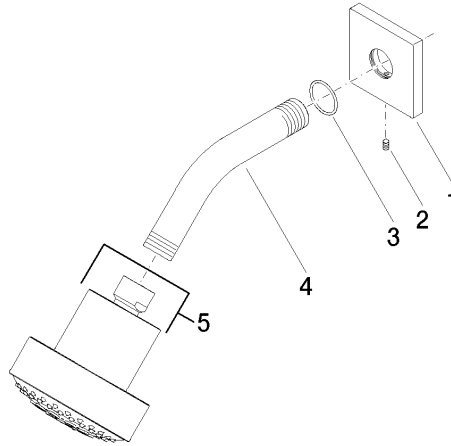
28 508 980

Certificates

LGA_38

IAPMO_4976

Parts for other
finishes can be found
here: [Chrome](#)





Shower head FlowReduce - Matte Black

IMO

28 508 980

Spare parts list