




EDITION PRO Rain shower with wall fixing 220 mm - Brushed Chrome

28 649 626



- 450mm projection
- rain flow
- with anti-scale system
- rain shower Ø 220 mm
- rosette Ø 60 mm
- 1/2" connection
- max. flow 14 l/min
- quick clearing
- WRAS 2212012

| | | |
|--|----------------|---------------|
|  | Brushed Chrome | 28 649 626-93 |
|  | Chrome | 28 649 626-00 |
|  | Matte Black | 28 649 626-33 |

Required miscellaneous

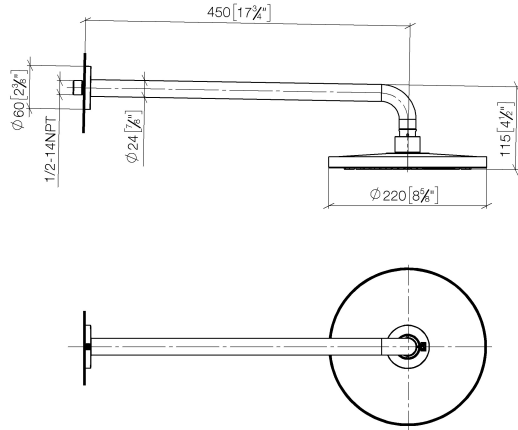


- Concealed wall elbow -** 35 085 970 90
- min. recess depth 90 mm
 - max. recess depth 163 mm

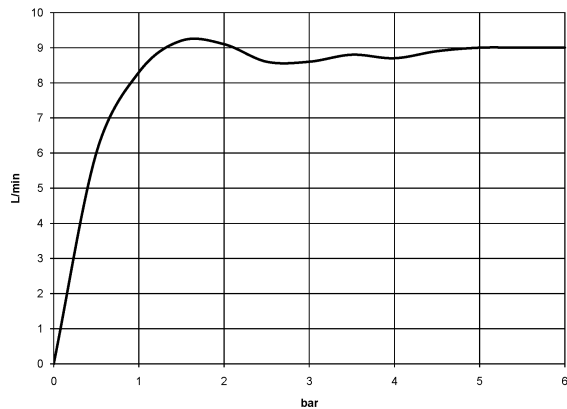
EDITION PRO Rain shower with wall fixing 220 mm - Brushed Chrome

28 649 626

mm [inches]



Flow rate chart



Codes & Standards

DIN 4109

ISO 3822

Scottish Water
Byelaws

UK Water Supply
Regulations

Ü-Zeichen



EDITION PRO Rain shower with wall fixing 220 mm - Brushed Chrome

28 649 626

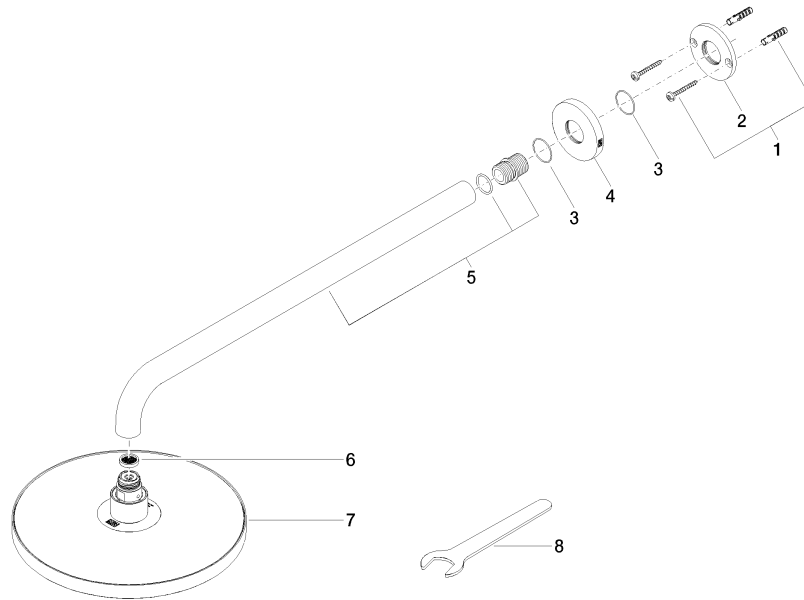
Certificates

LGA_38

WRAS_2212

EDITION PRO Rain shower with wall fixing 220 mm - Brushed Chrome

28 649 626





EDITION PRO Rain shower with wall fixing 220 mm - Brushed Chrome

28 649 626

Spare parts list

| No. | Item Number | Name | Quantity used | Delivery time |
|-----|--------------------|------------|---------------|---------------|
| | 04 30 31 032 00 90 | fixing set | 8 | 2 |