

## TARA ULTRA POT FILLER Cold-water valve - Durabronss (23kt Gold)

30 805 875 Product version from 10/1/2024



- 500mm projection
- pivoting spout
- laminar flow
- cold water only
- max. flow 5.7 l/min at 3 bar flow pressure
- min. recess depth 125 mm
- max. recess depth 80 mm
- lead-free
- This product can help a building meet the requirements of Green Building Rating Systems, e.g. LEED®, BREEAM®, DGNB
- WRAS

|   |                                |               |
|---|--------------------------------|---------------|
|    | Durabronss (23kt Gold)         | 30 805 875-09 |
|    | Chrome                         | 30 805 875-00 |
|    | Brushed Platinum               | 30 805 875-06 |
|    | Platinum                       | 30 805 875-08 |
|    | Dark Chrome                    | 30 805 875-19 |
|    | Brushed Durabronss (23kt Gold) | 30 805 875-28 |
|    | Brushed Champagne (22kt Gold)  | 30 805 875-46 |
|    | Champagne (22kt Gold)          | 30 805 875-47 |
|   | Brushed Chrome                 | 30 805 875-93 |
|  | Brushed Dark Platinum          | 30 805 875-99 |

### Required miscellaneous

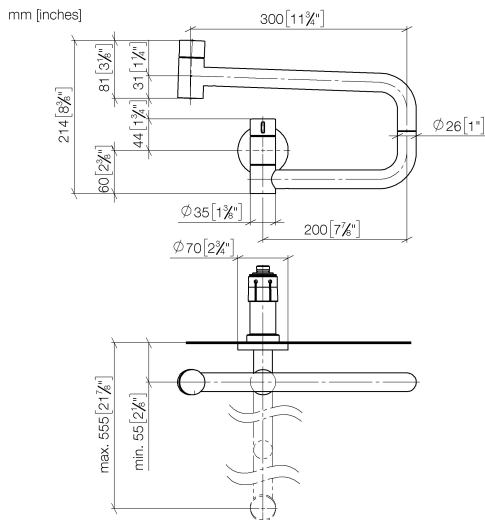
**POT FILLER Concealed wall elbow** 35 087 970 90



- min. recess depth mm
- max. recess depth mm

## TARA ULTRA POT FILLER Cold-water valve - Durabronss (23kt Gold)

30 805 875 Product version from 10/1/2024



### Flow rate chart



### Codes & Standards

| DIN 4109 | ISO 3822 | NSF372 | NSF61 |
|----------|----------|--------|-------|
|----------|----------|--------|-------|

|                           |                                |           |
|---------------------------|--------------------------------|-----------|
| Scottish Water<br>Byelaws | UK Water Supply<br>Regulations | Ü-Zeichen |
|---------------------------|--------------------------------|-----------|



TARA ULTRA POT FILLER Cold-water valve - Durabrace (23kt Gold)

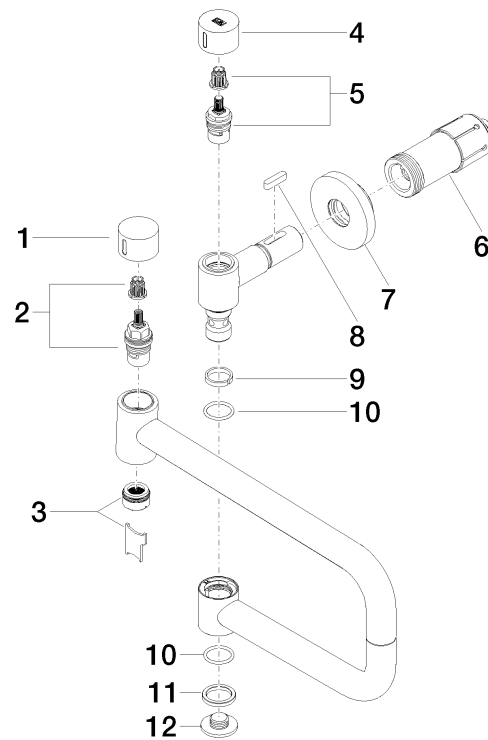
30 805 875 Product version from 10/1/2024

Certificates

|        |           |         |             |
|--------|-----------|---------|-------------|
| LGA_29 | IAPMO_N-4 | IAPMO_6 | WRAS_240702 |
|--------|-----------|---------|-------------|

## TARA ULTRA POT FILLER Cold-water valve - Durabrand (23kt Gold)

30 805 875 Product version from 10/1/2024



### Spare parts list

| No.  | Item Number        | Name       | Quantity used | Delivery time |
|--|--------------------|------------|---------------|---------------|
| 1  | 09 20 62 025-09    | handle     | 1             | 40            |
| 2  | 90 90 03 146 00 90 | top        | 1             | 2             |
| 3  | 90 23 01 026 11-09 | aerator    | 1             | 40            |
| 4  | 09 20 62 027-09    | handle     | 1             | -             |
| Spare part can no longer be ordered, please order the replacement item |                    |            |               |               |
| 5  | 90 90 03 171 00 90 | top        | 1             | 2             |
| 6  | 90 30 01 213 00 90 | connection | 1             | 2             |
| 7  | 90 27 87 039 00-09 | rosette    | 1             | 40            |
| 8  | 90 16 04 001 00 90 | spring     | 1             | 2             |
| 9  | 09 28 10 136 90    | ring       | 1             | 2             |
| 10   | 09 14 10 015 90    | seal       | 2             | 2             |
| 11   | 09 28 10 139 90    | ring       | 1             | 2             |
| 12   | 09 21 02 028-09    | lid        | 1             | 40            |