

Single-lever bidet mixer with pop-up waste - Brushed Platinum
SERIES SPECIFIC

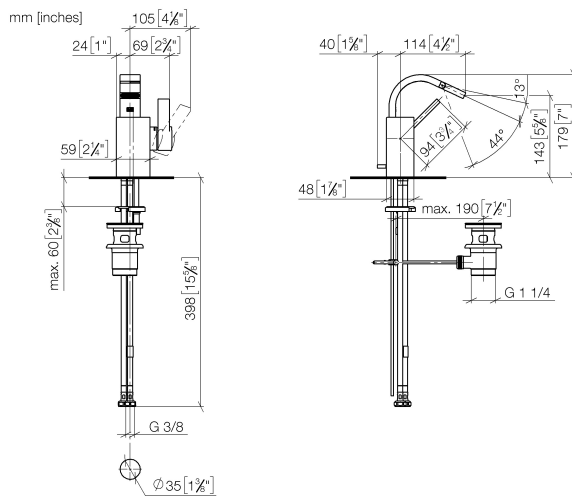
33 600 782
Product version from 3/10/2014 to 3/20/2019



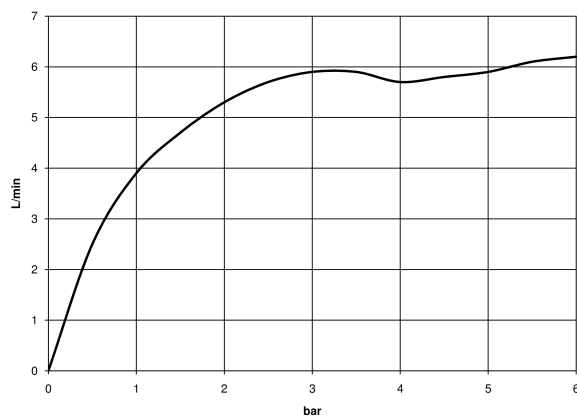
- 110mm projection
- ball-joint pivotable through 44°
- rectangular, air-enriched flow
- height of mixer 180 mm
- height up to aerator 140 mm
- hole diameter 35 mm
- 2x screw-in M 10 x 1 pressure hose, leak-tested
- max. flow 6 l/min
- WRAS

|   |                               |               |
|---|-------------------------------|---------------|
|  | Brushed Platinum              | 33 600 782-06 |
|  | Chrome                        | 33 600 782-00 |
|  | Platinum                      | 33 600 782-08 |
|  | Dark Chrome                   | 33 600 782-19 |
|  | Brushed Durabrass (23kt Gold) | 33 600 782-28 |
|  | Brushed Champagne (22kt Gold) | 33 600 782-46 |
|  | Champagne (22kt Gold)         | 33 600 782-47 |
|  | Brushed Dark Platinum         | 33 600 782-99 |

33 600 782 Product version from 3/10/2014 to 3/20/2019



### Flow rate chart



### Codes & Standards

DIN 4109

ISO 3822

Scottish Water  
Byelaws

UK Water Supply  
Regulations

### Ü-Zeichen



## Single-lever bidet mixer with pop-up waste - Brushed Platinum

SERIES SPECIFIC

33 600 782 Product version from 3/10/2014 to 3/20/2019

### Certificates and sustainability

LGA\_28

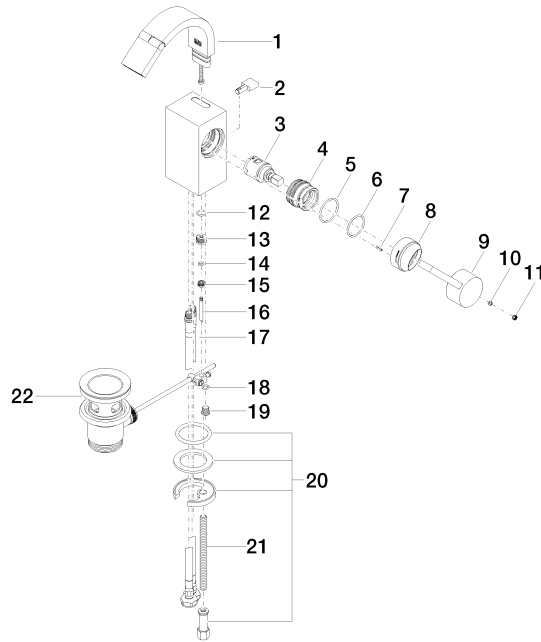
WRAS\_240202

## Single-lever bidet mixer with pop-up waste - Brushed Platinum

SERIES SPECIFIC

33 600 782 Product version from 3/10/2014 to 3/20/2019

Parts for other  
finishes can be found  
here: [Chrome](#)





## Single-lever bidet mixer with pop-up waste - Brushed Platinum

SERIES SPECIFIC

33 600 782 Product version from 3/10/2014 to 3/20/2019

### Spare parts list

| No. | Item Number        | Name         | Quantity used | Delivery time |
|-----|--------------------|--------------|---------------|---------------|
| 8   | 09 28 30 028-06    | cover        | 1.00          | 10            |
| 1   | 90 28 22 265 00-06 | spout        | 1.00          | 10            |
| 15  | 09 24 04 290 90    | nipple       | 1.00          | 2             |
| 5   | 09 14 10 137 90    | seal         | 1.00          | 2             |
| 16  | 09 31 09 080-06    | pull-rod     | 1.00          | 10            |
| 7   | 09 31 11 152 90    | pin          | 1.00          | 2             |
| 17  | 04 30 04 104 00 90 | hose         | 2.00          | 2             |
| 12  | 09 14 10 042 90    | seal         | 1.00          | 2             |
| 13  | 09 24 04 289-06    | nipple       | 1.00          | 10            |
| 21  | 09 31 11 012 90    | pin          | 1.00          | 2             |
| 3   | 90 15 05 042 00 90 | cartridge    | 1.00          | 2             |
| 4   | 09 24 04 288 90    | nut          | 1.00          | 2             |
| 9   | 09 20 78 057-06    | handle       | 1.00          | 10            |
| 14  | 09 14 10 166 90    | seal         | 1.00          | 2             |
| 18  | 09 14 10 132 90    | seal         | 1.00          | 2             |
| 20  | 04 30 11 038 75 90 | fixing set   | 1.00          | 2             |
| 2   | 09 20 78 032-06    | handle       | 1.00          | 10            |
| 19  | 09 31 20 027 10-00 | plug         | 1.00          | 10            |
| 22  | 90 11 01 001 00-06 | pop-up waste | 1.00          | 10            |
| 10  | 90 31 11 063 00 90 | pin          | 1.00          | 2             |
| 11  | 90 31 20 109 00 90 | plug         | 1.00          | 2             |
| 6   | 90 14 10 063 00 90 | seal         | 1.00          | 2             |