

ELIO Single-lever mixer Pull-out - Brushed Platinum

ELIO

33 840 790 Product version from 12/31/2013 to 5/15/2020



- 235mm projection
- pivotable spout 360°
- air-enriched flow
- height of mixer 337 mm
- height up to aerator 300 mm
- hole diameter 35 mm
- fabric braided hose 1500 mm
- max. flow 8.8 l/min at 3 bar flow pressure
- lead-free
- This product can help a building meet the requirements of Green Building Rating Systems, e.g. LEED®, BREEAM®, DGNB

Intrinsic protection against back flow.

	Brushed Platinum	33 840 790-06
	Chrome	33 840 790-00
	Platinum	33 840 790-08
	Dark Chrome	33 840 790-19
	Brushed Durabrass (23kt Gold)	33 840 790-28
	Brushed Bronze	33 840 790-42
	Brushed Champagne (22kt Gold)	33 840 790-46
	Champagne (22kt Gold)	33 840 790-47
	Brushed Chrome	33 840 790-93
	Brushed Dark Platinum	33 840 790-99

Recommended miscellaneous

**Dispenser without rosette -
Brushed Platinum**

82 424 970-06



Recommended miscellaneous

**Strainer waste with control handle -
Brushed Platinum**

10 712 970-06



33 840 790 Product version from 12/31/2013 to 5/15/2020



Flow rate chart



Codes & Standards

DIN 4109

EN 1717

Executive Order
no. 1007

ISO 3822

Ü-Zeichen



ELIO Single-lever mixer Pull-out - Brushed Platinum

ELIO

33 840 790 Product version from 12/31/2013 to 5/15/2020

Certificates and sustainability

GDV_0400

LGA_19

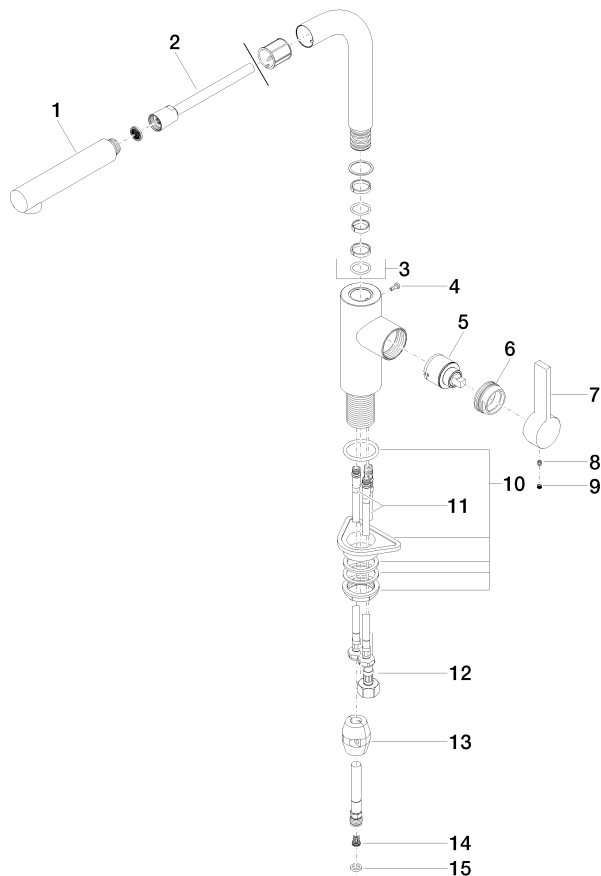
Belgaqua_22_277_2

ELIO Single-lever mixer Pull-out - Brushed Platinum

ELIO

33 840 790 Product version from 12/31/2013 to 5/15/2020

Parts for other
finishes can be found
here: [Chrome](#)



Spare parts list

No.	Item Number	Name	Quantity used	Delivery time
7	09 20 79 040-06	handle	1.00	10
1	04 12 11 106 00-06	shower	1.00	10
13	04 21 50 005 00 90	accessories	1.00	2
10	04 23 10 044 02 90	fixing set	1.00	2
6	09 24 04 141-06	nut	1.00	10
14	09 23 01 131 90	back-flow preventer	1.00	2
11	04 30 04 104 00 90	hose	2.00	2
4	09 30 30 054 90	screw	1.00	2
3	90 28 22 186 00-06	spout	1.00	10
12	04 30 04 029 00 90	hose	1.00	2
8	90 31 11 030 00 90	pin	1.00	2
15	90 14 20 019 00 90	seal	1.00	2
9	90 31 20 109 00 90	plug	1.00	2
5	90 15 05 045 00 90	cartridge	1.00	2
2	90 30 02 062 00-06	hose	1.00	10